

# Easy Conforming Back

Clear Form

Email Form to  
Customer Service



## Freedom Designs, Incorporated

2241 N Madera Road, Simi Valley, CA 93065  
phone: 800-331-8551 fax: 888-582-1509  
e: customerservice@freedomdesigns.com



Quote Order

Yes, you can:

Buyer: \_\_\_\_\_  
Co./Account: \_\_\_\_\_  
Location: \_\_\_\_\_  
Contact #: \_\_\_\_\_  
P.O. #: \_\_\_\_\_  
Marked For: \_\_\_\_\_  
Fax: \_\_\_\_\_  
Email: \_\_\_\_\_

### Wheelchair Specifications

Model: \_\_\_\_\_  
Width: \_\_\_\_\_  
Depth: \_\_\_\_\_

### Upholstery Selections **Black lycra standard. Stretch fabrics recommended.**

Body Contact Surfaces		Non-Contact Surfaces	
Number:	Choose:	Number:	Choose:
Monogram Option		Embroidery Option	
Name:		Design:	
Script	Block		
Thread Color:			

## Easy Conforming Standard

102-12000	4 J's and L's and 4 Glide Locks
102-17000	4 J's and L's and 2 Glide Locks with 2 Split Collars
102-20000	4 Easy Clamps
EZ CONF2	2 J's and L's and 2 Glide Locks and Hinges



E2617

\$1097  
\$1097  
\$1274  
\$1097

## Easy Conforming Extended

102-13000	4 J's and L's and 4 Glide Locks
102-18000	4 J's and L's and 2 Glide Locks with 2 Split Collars
102-30000	4 Easy Clamps
EZ CONF-EXT 2	2 J's and L's and 2 Glide Locks and Hinges



E2617

\$1097  
\$1097  
\$1274  
\$1097

## Back Modifications

MOD-2QQ	Split Outer Wings	\$ 243	MOD-2SS	Laterals Upholstered	\$ 203
	<b>Standard Easy Conforming Back Only</b>			Separate from center panel	
MOD-2UU	Wings Molded Together	\$ 243	MOD-2S	Free Form (box style)	\$ 272
MOD-2Econo4	Hardware Substitution 4-Point	\$ 175	MOD-2Econo2	Hardware Substitution 2-Point	\$ 59
	Econo-Eze			Econo-Eze	
MOD-2OVER18	Oversize Back Over 18" wide or 18" high	\$ 70	MOD-2OVER24	Oversize Back Over 24" wide or 24" high	\$ 118
MOD-2OVER 22	Oversize Back Over 22" wide or 22" high	\$ 95			
77PLATEMATE	Headrest Adapter - Universal	\$ 49	7733	Adaptaplate - Headrest Adapter - Universal & Freedom	\$ 66

## Back Foam

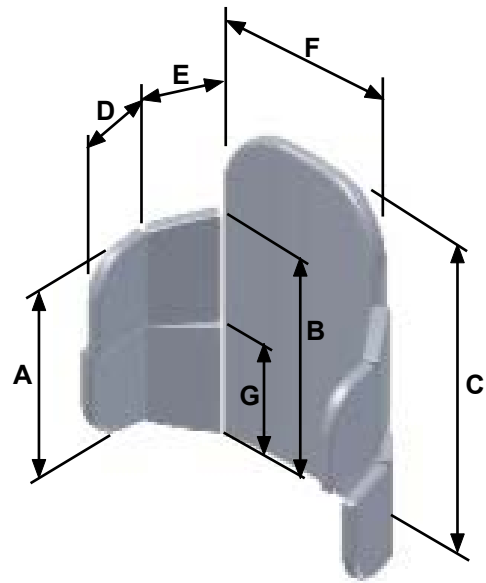
3# Foam	\$ 47 per 1"	Firm Sunmate	\$110 per 1"	Pudgee	\$237 per 1"
4# Foam	\$ 47 per 1"	X-Soft T-Foam	\$119 per 1"	Waffle	\$282 per 1/2"
5# Foam	\$ 65 per 1"	Soft T-Foam	\$119 per 1"	Waffle (over 18x16)	\$567 per 1/2"
Soft Sunmate	\$110 per 1"	Medium T-Foam	\$119 per 1"	Free Float	\$355 per 1/2"
Medium Sunmate	\$110 per 1"	Firm T-Foam	\$119 per 1"	FreeFloat (over 18x16)	\$708 per 1/2"



# Easy Conforming Back

## Dimensions - Standard

Width	A	B	C	D	E	F	G
11/12	7	8	13	3	2	7	
13/14	9.5	10.5	15	4	3	9	
15/16	10.5	11.5	17	4	3	11	
17/18	11	12.5	19	4	3	13	
19/20	12	13.5	21	4	3.5	15	
21/22	13	14.5	23	4	3.5	17	
23/24	14	15.5	25	4	3.5	19	
25/26	14	15.5	27	4	3.5	21	



Comments:

## Custom Dimensions

	Left	Right
A		
B		
C		
D		
E		
F	See Chart	
G		

G Measurement on Standard is for Split-Wing measurement

## Dimensions - Extended

Width	A	B	C	D	E	F	G
11/12	5	6	13	3	2	7	8
13/14	6	7	15	4	3	9	10.5
15/16	7	7.5	17	4	3	11	11.5
17/18	7.5	8	19	4	3	13	12.5
19/20	8	9	21	4	3.5	15	13.5
21/22	9	10.5	23	4	3.5	17	14.5
23/24	9	10.5	25	4	3.5	19	14.5
25/26	9	10.5	27	4	3.5	21	14.5

