



Yes, you can.®



Freedom 2Kids Manual Wheelchair

Clear Form

Email Form to
Customer Service

2241 N Madera Rd Simi Valley, CA 93065 Phone: (800) 331-8551 Fax: (888) 582-1509 www.freedomdesigns.com email: customerservice@freedomdesigns.com

Date: _____ Buyer: _____ Quote Order Install Seating? PinDot Matrix
 Company: _____ PO#: _____
 Marked For: _____ Location: _____
 Email: _____ Phone: _____

Description	hccps	Part No.	Retail	Description	hccps	Part No.	Retail
-------------	-------	----------	--------	-------------	-------	----------	--------

Base Options

A seating system must be purchased separately. No seating system is provided with the FD2K frame.

Transport Optional

FD2K Folding	(E1238) or (K0005)	FD2K-30270	\$2085
FD2K Rigid	(E1238) or (K0005)	FD2K-30270R	\$2085

Transportation Option selected separately below.

Includes Freedom Future Fit Program

Transport Brackets		FD2K-99998	\$ 300
--------------------	--	------------	--------

Must be installed by Freedom Designs manufacturing.

Freedom's combination of customized seating and wheelchair frames are WC19 crash test approved in accordance with RESNA WC-4: 2012 Section 19, Annexes A, B, C & E as well as ISO 7176-19 (2008) Annexes A, C & D.

Most Freedom seating, hardware, and positioning accessories have been WC20 tested and approved for transit.

Frame Dimensions

Frame Width Setting & Cross Brace

11"	FD2K-30210	n/c
12"	FD2K-30220	n/c
13"	FD2K-30230	n/c
14"	FD2K-30240	n/c
15"	FD2K-30290	n/c
16"	FD2K-30260	n/c
17"	FD2K-30330	n/c
18"	FD2K-30280	n/c

Frame widths measures across and from outside of seat frame tubes. Vent and battery trays only with 14" wide and greater frame.

Frame Size & Back Post Setting

Regular Frame Length Adjusts 10" to 14"			Long Frame Length Adjusts 13" to 17"		
10"	FD2K-10	n/c	13"	FD2K-13	n/c
11"	FD2K-11	n/c	14"	FD2K-14	n/c
12"	FD2K-12	n/c	15"	FD2K-15	n/c
13"	FD2K-13	n/c	16"	FD2K-16	n/c
14"	FD2K-14	n/c	17"	FD2K-17	n/c

Seat Upholstery Options

Seat Sling	FD2K-39011	n/c	Omit Seat Sling	FD2K-39004
------------	------------	-----	-----------------	------------

Not available with ANY Single Post Armrest.

Seat Sling Depth

10"	FD2K-30500	n/c
11"	FD2K-30501	n/c
12"	FD2K-30502	n/c
13"	FD2K-30503	n/c
14"	FD2K-30504	n/c
15"	FD2K-30505	n/c
16"	FD2K-30506	n/c
17"	FD2K-30507	n/c

Seat Cushion Options

1" Seat Cushion	FD2K-39003	\$..91
2" Seat Cushion	FD2K-39007	\$..102

Includes 4# foam & black knit cover with zipper closure.

Description	hccps	Part No.	Retail	Description	hccps	Part No.	Retail
Frame Colors							
Sugar Cookie			n/c	Blue Blast			n/c
Neon Yellow			n/c	Electric Blue			n/c
Yellow			n/c	Galaxy Blue			n/c
Bright Pink			n/c	Passion Purple			n/c
Pink Parfait			n/c	Octane Orange			n/c
Sugar Plum			n/c	Red Sunset			n/c
Candy Violet			n/c	Really Red			n/c
Candy Raspberry			n/c	Fiery Red			n/c
Extreme Green			n/c	Twilight			n/c
Sparkle Green			n/c	Stormy Gray			n/c
Mystic Teal			n/c	Black			n/c
Pacific Blue			n/c	Color to be Determined			

Back Posts

Back Post Options							
Fold-Down Back Posts		FD2K-30545	n/c	Dynamic Rocker Back - Seating Dynamics	(K0108)	FD2K-30532	\$1985
Angle adjustable from 72° to 108° in 6° increments. Can be locked-out when needed. Includes a set of 4 elastomers in different durometers to allow spring adjustment in the field.							

Push Handle Options							
90° Bend Back Post Tubes		FD2K-30518	n/c	Straight Back Post Tubes		FD2K-30600	n/c

Push Handle Height				Straight Back Post Height			
Short - 20" High		FD2K-30515	n/c	10" High		FD2K-30610	n/c
Medium - 23" High		FD2K-30514	n/c	11" High		FD2K-30611	n/c
Tall - 26" High		FD2K-30516	n/c	12" High		FD2K-30612	n/c
				13" High		FD2K-30613	n/c
				14" High		FD2K-30614	n/c
				15" High		FD2K-30615	n/c

Back Upholstery Options

Back Sling - Standard		FD2K-39006	n/c	Omit Back Sling		FD2K-39005	
Back Sling - Tension Adjustable		FD2K-39008	\$ 248				

Back Sling Height							
10" High		FD2K-30910	n/c	15" High		FD2K-30915	n/c
11" High		FD2K-30911	n/c	16" High		FD2K-30916	n/c
12" High		FD2K-30912	n/c	17" High		FD2K-30917	n/c
13" High		FD2K-30913	n/c	18" High		FD2K-30918	n/c
14" High		FD2K-30914	n/c				

Sling back height must be selected when ordering Standard or Adjustable Tension Sling Back Upholstery

Push Handle Extension Options



-30560

-30590

-30570

-30575

-30517

All push handle extensions except FD2K-30560 add approximately 6.5" to push handle height. All push handle extensions except Individual include a black neoprene wrap around pad.

Push Handle Extension - Width Adjustable		FD2K-30560	n/c	Stroller Handle Extension - Width Adjustable, Removable		FD2K-30590	\$ 95
Not available with Straight Back Posts.				Not available with Straight Back Posts.			
Push Button, Angle-Adjustable Stroller Handle Extension		FD2K-30570	\$ 112	Heavy Duty Push Button, Angle-Adjustable Stroller Handle Extension		FD2K-30575	\$ 179
Available on wheelchair frames 15W & smaller only. Plastic hinge up to 200° range of adjustment. Not removable, but does allow frame to fold.				Available on any size frame. Metal hinge up to 180° range of adjustment. Not removable, but does allow frame to fold.			
Individual Stroller Handle Extensions Removable - Pair		FD2K-30517	\$ 110				
Not available with Straight Back Posts.							

Description	hccps	Part No.	Retail	Description	hccps	Part No.	Retail
Footrests							
Hangers							
75° Pop-Up Swing Away Hangers		FD2K-30280	n/c	75° Latch Style Swing Away Hangers		FD2K-30282	n/c
90° Pop-Up Swing Away Hangers		FD2K-30281	n/c	90° Latch Style Swing Away Hangers		FD2K-30283	n/c
<i>Not available with 8" Telescoping Extensions.</i>				<i>Not available with 8" Telescoping Extensions.</i>			
90° Pop-Up Swing Away Elevating Legrests (ELRs)	(E0990)	FD2K-30279	\$ 295	Omit Legrest Hangers & Footrests		FD2K-33000	

Footplates & Footboards							
Aluminum Angle Adj. Flip-up Footplates	(K0040)	FD2K-36033	\$ 190	Aluminum Angle Adjustable Foot-board Removable	(K0040)	FD2K-36029	\$ 190
<i>Does not include Heel Loops, select below.</i>							
Composite Flip-Up		FD2K-17070	n/c	Omit Footrest Plates		FD2K-36404	

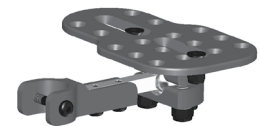
Footrest / Extension Lengths

Extension/Hanger	75° Pop	75° Lch	90° Pop	90° Lch	ELR (90°)
Hanger Only	6"-8"	5.5"-8.5"	4"-8"	4"-8"	6"-12"
High Mount	N/A	N/A	1.5"-3"	N/A	N/A
4.5" H D Ext.	9"-12"	9.5"-12.5"	9"-12"	9"-12"	13"-15"
6.5" H D Ext.	9"-15"	9.5"-15.5"	9"-15"	9"-15"	13"-17"
4" Adjustable	10"-13"	9.5"-12.5"	11"-13"	10"-13"	13"-15"
6" Adjustable	12"-15"	10.5"-14.5"	13"-15"	12"-15"	13"-18"
8" Adjustable	14"-17"	12.5"-16.5"	N/A	N/A	14"-20"
10" Adjustable	16"-19"	14.5"-18.5"	N/A	N/A	16"-22"

MAPS Footrest / Extension Lengths

Extension/Hanger	75° Pop	75° Lch	90° Pop	90° Lch	ELR (90°)
Hanger Only	5.5"-7.5"	5"-8"	5.5"-7.5"	4.5"-7.5"	4.5"- 8.5" & 11.5"
High Mount	N/A	N/A	N/A	N/A	N/A
4.5" H D Ext.	8.5"-11.5"	9"-12"	8.5"-11.5"	8.5"-11.5"	12.5"-14.5"
6.5" H D Ext.	8.5"-13.5"	9"-14"	8.5"-13.5"	8.5"-13.5"	12.5"-16.5"
4" Adjustable	8.5"-11.5"	9"-12"	9.5"-11.5"	8.5"-11.5"	12.5"-14.5"
6" Adjustable	10.5"-13.5"	10"-14"	11.5"-13.5"	8.5"-13.5"	12.5"-17.5"
8" Adjustable	12.5"-15.5"	12"-16"	N/A	N/A	13.5"-19.5"
10" Adjustable	14.5"-17.5"	14"-18"	N/A	N/A	15.5"-21.5"

Length is measured from top of footrest plate to top of seat rail. Without extensions bottom hanger hole not accessible for hardware. Heavy duty extensions do not telescope adjust. Footrests adjust vertically in length on heavy duty extension tubes.



Footplate Options							
MAPS (Multi Axis Positioning System)		FD2K-36040	\$ 325	Heel Loops	(E0951)	FD2K-36022	\$ 45
<i>Requires selection of Aluminum Angle Adjustable Footplates. Not compatible with Composite footplates or Aluminum Footboard. Not compatible with Seating Dynamics hangers.</i>				Calf Strap - Webbing	(K0038)	FD2K-36024	\$ 45

Hanger Extension Options							
4" Telescoping Extensions		FD2K-30285	n/c	6" Telescoping Extensions		FD2K-30286	n/c
8" Telescoping Extensions		FD2K-30287	n/c				
<i>Not available with all 90° hangers.</i>							
4.5" Heavy Duty Extensions		FD2K-36402	\$ 58	6.5" Heavy Duty Extensions		FD2K-36403	\$ 68
<i>Heavy duty extensions do not telescope adjust. Footrests adjust vertically in length on heavy duty extension tubes.</i>							
High Mount Clamp & Tubes		FD2K-36410	\$ 102	Clear Selection			

Armrests

Back Post Mounted Armrests							
Omit Armrests							
<i>Foam wrap pad STD on all back post mounted armrests..</i>							
10.5" Flip-Back		FD2K-38204	n/c	10.5" Flip-Back Locking	(E0973)	FD2K-38201	\$ 265
13.5" Flip-Back		FD2K-38202	n/c	13.5" Flip-Back Locking	(E0973)	FD2K-38200	\$ 265
10.5" to 13.5" Flip-Back Locking, Telescoping	(E0973)	FD2K-38210	\$ 285	17" to 20" Flip-Back Locking, Telescoping	(E0973)	FD2K-38215	\$ 285
<i>Full length pad on 13.5" or longer armrests only.</i>							

Frame Mounted Armrests							
Single Post Height Adjustable, Removable - Low	(E0973)	FD2K-38217	\$ 285	Single Post Height Adjustable, Removable - Standard	(E0973)	FD2K-38203	\$ 285
<i>Not available with seat sling</i>				<i>Not available with seat sling</i>			

Arm Pad Options							
Desk Length Pads		FD2K-38213	n/c	Full Length Pads		FD2K-38214	n/c
				<i>13.5" or longer armrests only.</i>			

Description	hccps	Part No.	Retail	Description	hccps	Part No.	Retail
Armrest Heights							
Armrest and Pad		Foam	Desk			Full	
Flip Back		6.5" - 11.5"	7.5" - 12.5"			7.5" - 12.5"	
Flip Back Locking		6.5" - 11.5"	7.5" - 12.5"			7.5" - 12.5"	
Telescoping Flip Back		6.5" - 11.5"	7.5" - 12.5"			7.5" - 12.5"	
Flip Back Locking Telescoping		6.5" - 11.5"	7.5" - 12.5"			7.5" - 12.5"	
Single Post Height Adj. Short			8" - 14"			8" - 14"	
Single Post Height Adj. Tall			10" - 16"			10" - 16"	

All heights from top of seat frame to top of armrest pad.



Wheel/Caster Seat Rail to Floor Heights					
Rear Wheel	Caster Wheel				
	3"	4"	5"	6"	7"
12"	14"-14.5"	15"	17"	17.5"	
16"	13"-14.5"	13.5"-14"	14"-14.5"	14.5"-15"	15"-15.5"
18"	14"-15.5"	15.5"	16"	16.5"	17"
20"	16"-17.5"	15"	15.5"-17.5"	17"-17.5"	18"
22"	15.5"	16"-17"	16.5"-17.5"	17"-18.5"	18"-18.5"
24"	16"	16.5"-17.5"	17"-18"		

Clear selection

Use chart to determine seat rail to floor height. Caster sizes may vary slightly in height by type. Seat rail to floor heights are approximate, and are impacted by wheel type, caster size and braking choice. Heights can vary +/- 1/4". Seat pan choice increases seat rail to floor height 3/8" to 3/4".

Casters							
3" x 1" Polyurethane		FD2K-34888	n/c	3" Polyurethane Light-Up		FD2K-34111	\$ 87
4" x 1" Polyurethane		FD2K-40000	n/c	4" x 1.4" Poly, Aluminum Mag		FD2K-43000	\$ 125
5" x 1" Polyurethane		FD2K-34555	n/c	5" Polyurethane Light-Up		FD2K-35050	\$ 101
5" x 1.5" Polyurethane		FD2K-34222	\$ 87	5" x 1.4" Poly, Aluminum Mag		FD2K-42000	\$ 125
6" x 1" Polyurethane		FD2K-34666	n/c	6" x 1.4" Poly, Aluminum Mag		FD2K-44000	\$ 125
6" x 1.5" Polyurethane		FD2K-34999	\$ 87	6" x 2" Polyurethane, Treaded		FD2K-34444	\$ 97
7" x 1" Polyurethane		FD2K-34777	n/c	7" x 2" Foam Filled		FD2K-34200	\$ 200

7" casters not available with 12" mag wheels.

Rear Wheels							
Mags				Spoke			
12" Mag Wheel		FD2K-31525	n/c	16" Spoke Wheel - Black w/ Black Tire		FD2K-31535	n/c
12" mag wheels not available with 7" casters.							
16" Mag Wheel		FD2K-31530	\$ 41	18" Spoke Wheel - Black w/ Black Tire		FD2K-31538	n/c
18" Mag Wheel		FD2K-31533	\$ 41	20" Spoke Wheel - Aluminum Handrim		FD2K-31540	\$ 204
20" Mag Wheel - Aluminum Handrim		FD2K-31527	n/c	22" Spoke Wheel - Aluminum Handrim		FD2K-31541	\$ 204
22" Mag Wheel - Aluminum Handrim		FD2K-31528	n/c	24" Spoke Wheel - Aluminum Handrim		FD2K-31542	\$ 204
24" Mag Wheel - Aluminum Handrim		FD2K-31529	n/c	20", 22" & 24" Spoke Wheels not available with drum brakes. Spoke wheels not available with plastic coated handrims.			

Tire Options				Handrim Options			
Pneumatic Tire		FD2K-31040	\$ 85	Plastic Coated Handrims		FD2K-31005	\$ 119
Pneumatic Tire with Airless Insert	(E2213)	FD2K-31000	\$ 85	20", 22" & 24" Mag wheels only, not available with drum brakes			
Low Profile Polyurethane Tire	(E2218)	FD2K-31045	n/c	Omit Handrims		FD2K-31006	

12" Mag wheel only, not available with drum brakes

Wheel Locks							
Standard				Drum Lock			
Push to Lock		FD2K-31501	n/c	Includes manual wheel locks to be used with public transportation. Not available with 12" mag wheels with low pro poly tires. Not Available with 20", 22" & 24" Spoke Wheels.			
Pull to Lock		FD2K-31506	n/c	Hand Activated Brake and Wheel	(E2228)	FD2K-30275	\$ 1000
Lock System							
Wheel Lock Options							
Extension Handles	(E0961)	FD2K-31801	\$ 75				

Description	hccps	Part No.	Retail	Description	hccps	Part No.	Retail
-------------	-------	----------	--------	-------------	-------	----------	--------

Anti-Tippers

Anti-Tip Assembly - Fixed	(E0971)	FD2K-31600	\$ 125	Anti-Tip Assembly - Swing-Away	(E0971)	FD2K-31602	\$ 125
---------------------------	---------	------------	--------	--------------------------------	---------	------------	--------

Seat Pans

ALL seat pans include 2" x 2" notches for growth adjustment.

Non-Adjustable

Fixed Solid Seat Pan - Composite	(E2231)	FD2K-39010	\$ 170
----------------------------------	---------	------------	--------

ALL Bolteron seat pans are made to fit frame dimensions unless specified below.

Seat Width _____" X Seat Depth _____"

Fixed Solid Seat Pan - Aluminum	(E2231)	FD2K-39030	\$ 200
---------------------------------	---------	------------	--------

Fixed Seat Pan raises the effective seat to floor height by 1/2".

Available in the following sizes ONLY:

- 10" wide x 12" deep
- 12" wide x 14" deep
- 14" wide x 16" deep
- 16" wide x 18" deep
- 18" wide x 18" deep

Adjustable

Fixed, Width Adjustable Solid Seat Pan - Aluminum	(E2231)	FD2K-39040	\$ 290
---	---------	------------	--------

Fixed Seat Pan raises the effective seat to floor height by 1/2".

Width Adjustable Solid Seat Pan adjusts 2" in width (in 1" increments) by assembly hardware to grow with FD2K frame.

Available in the following sizes ONLY:

- 10"-12" wide x 12" deep
- 12"-14" wide x 14" deep
- 14"-16" wide x 16" deep
- 16"-18" wide x 18" deep

Mounting Hardware Options

Use to convert fixed seat pan to removable.

Removable Pan Hardware Kit	(K0108)	FD2K-EZLITE	\$ 207
----------------------------	---------	-------------	--------

Removable Seat Pan Hardware raises the effective seat to floor height by 5/8".

Includes 4-points of EZ-Lite mounting hardware, 2 each frame stopper clamps.

Accessories

Clothing Guards - Fabric		FD2K-CGF	\$ 75	Clothing Guards - Rigid		FD2K-CGR	\$ 128
Footrest Hanger Pads - Pair	(K0108)	SFDI-9HP	\$ 97	Freedom Backpack	(K0108)	FD2K-10900	\$ 60

Wrap-around pads made from black neoprene.

Black Nylon only with Freedom Designs logo. Monogramming is not available on Freedom Backpack.

Flip-Down Rigidizing Bar	(K0108)	FD2K-23210	\$ 175
--------------------------	---------	------------	--------

Mounts to back post tubes to add rigidity to frame. Does NOT adjust in width to grow with frame.

Freedom Canopy - Flip-Back	(K0108)	FD2K-10905	\$ 134
----------------------------	---------	------------	--------

Canopy assembly includes removable mounting hardware. Available in black only with Freedom Designs logo. Includes rear flap with zippered storage pocket and clear-view window.

Specifications:

Frame Style	Ultra-light Active Manual
Frame Widths	11" - 18"
Overall Width	Base width + 7.5" (all wheels without drum lock) Base width + 8.5" (with drum lock except 16" & 18" mag wheel) Base width + 9.5" (with drum brake and 16" or 18" mag wheel)
Seat Widths	11" - 18"
Seat Depths	15" - 21"
Back Heights	20", 23", 26"
Adjustable Angle Back	90°, 100°, 110°, 120°
Recline Back	N/A
Weight Limit	250 LBS.
Transport Weight	
Warranty	Lifetime on frame

HCPCS Codes:

are provided based on verification through PDAC or our interpretation of the code definitions. The use of HCPCS codes does not ensure coverage or payment. For coverage information, verify the appropriate payer's coverage policy.