



Yes, you can.®



Freedom 2 Manual Wheelchair

Clear Form

Email Form to Customer Service

2241 N Madera Rd Simi Valley, CA 93065 Phone: (800) 331-8551 Fax: (888) 582-1509 www.freedomdesigns.com email: customerservice@freedomdesigns.com

Date: _____ Buyer: _____ Quote Order Install Seating? PinDot Matrix
 Company: _____ PO#: _____
 Marked For: _____ Location: _____
 Email: _____ Phone: _____

Description	hccps	Part No.	Retail	Description	hccps	Part No.	Retail
-------------	-------	----------	--------	-------------	-------	----------	--------

Base Options

A seating system must be purchased separately. No seating system is provided with the FD2 frame.

Transport Optional

FD2 Folding	(E1238) or (K0005)	FD2-30270	\$2085
FD2 Rigid	(E1238) or (K0005)	FD2-30270R	\$2085

Transportation Option selected separately below.

Includes Freedom Future Fit Program

Transport Brackets		FD2-99998	\$ 300
--------------------	--	-----------	--------

Must be installed by Freedom Designs manufacturing.

Freedom's combination of customized seating and wheelchair frames are WC19 crash test approved in accordance with RESNA WC-4: 2012 Section 19, Annexes A, B, C & E as well as ISO 7176-19 (2008) Annexes A, C & D.

Most Freedom seating, hardware, and positioning accessories have been WC20 tested and approved for transit.

Frame Dimensions

Frame Width Setting & Cross Brace

11"	FD2-30210	n/c
12"	FD2-30220	n/c
13"	FD2-30230	n/c
14"	FD2-30240	n/c
15"	FD2-30290	n/c
16"	FD2-30260	n/c
17"	FD2-30330	n/c
18"	FD2-30280	n/c

Frame widths measures across and from outside of seat frame tubes. Vent and battery trays only with 14" wide and greater frame.

Frame Size & Back Post Setting

Regular Frame Length	Adjusts 15" to 19"	Long Frame Length	Adjusts 17" to 21"		
15"	FD2-15	n/c	17"	FD2-17	n/c
16"	FD2-16	n/c	18"	FD2-18	n/c
17"	FD2-17	n/c	19"	FD2-19	n/c
18"	FD2-18	n/c	20"	FD2-20	n/c
19"	FD2-19	n/c	21"	FD2-21	n/c

Seat Upholstery Options

Seat Sling	FD2-39011	n/c	Omit Seat Sling	FD2-39004
------------	-----------	-----	-----------------	-----------

Not available with ANY Single Post Armrest.

Seat Sling Depth

15"	FD2-39015	n/c
16"	FD2-39016	n/c
17"	FD2-39017	n/c
18"	FD2-39018	n/c
19"	FD2-39021	n/c
20"	FD2-39022	n/c
21"	FD2-39023	n/c

Seat Cushion Options

1" Seat Cushion	FD2-39003	\$..91
2" Seat Cushion	FD2-39007	\$..102

Includes 4# foam & black knit cover with zipper closure.

Description	hccps	Part No.	Retail	Description	hccps	Part No.	Retail
Frame Colors							
Sugar Cookie			n/c	Blue Blast			n/c
Neon Yellow			n/c	Electric Blue			n/c
Yellow			n/c	Galaxy Blue			n/c
Bright Pink			n/c	Passion Purple			n/c
Pink Parfait			n/c	Octane Orange			n/c
Sugar Plum			n/c	Red Sunset			n/c
Candy Violet			n/c	Really Red			n/c
Candy Raspberry			n/c	Fiery Red			n/c
Extreme Green			n/c	Twilight			n/c
Sparkle Green			n/c	Stormy Gray			n/c
Mystic Teal			n/c	Black			n/c
Pacific Blue			n/c	Color to be Determined			

Back Posts

Back Post Options							
Fold-Down Back Posts		FD2-30545	n/c	Dynamic Rocker Back - Seating Dynamics	(K0108)	FD2-30532	\$1985
Angle adjustable from 72° to 108° in 6° increments. Can be locked-out when needed. Includes a set of 4 elastomers in different durometers to allow spring adjustment in the field.							

Push Handle Options							
90° Bend Back Post Tubes		FD2-30518	n/c	Straight Back Post Tubes		FD2-30600	n/c

Push Handle Height				Straight Back Post Height			
Short - 20" High		FD2-30515	n/c	10" High		FD2-30610	n/c
Medium - 23" High		FD2-30514	n/c	11" High		FD2-30611	n/c
Tall - 26" High		FD2-30516	n/c	12" High		FD2-30612	n/c
				13" High		FD2-30613	n/c
				14" High		FD2-30614	n/c
				15" High		FD2-30615	n/c

Back Upholstery Options

Back Sling - Standard		FD2-39006	n/c	Omit Back Sling		FD2-39005	
Back Sling - Tension Adjustable		FD2-39008	\$ 248				

Back Sling Height							
10" High		FD2-30910	n/c	15" High		FD2-30915	n/c
11" High		FD2-30911	n/c	16" High		FD2-30916	n/c
12" High		FD2-30912	n/c	17" High		FD2-30917	n/c
13" High		FD2-30913	n/c	18" High		FD2-30918	n/c
14" High		FD2-30914	n/c				

Sling back height must be selected when ordering Standard or Adjustable Tension Sling Back Upholstery

Push Handle Extension Options



-30560

-30590

-30570

-30575

-30517

All push handle extensions except FD2-30560 add approximately 6.5" to push handle height. All push handle extensions except Individual include a black neoprene wrap around pad.

Push Handle Extension - Width Adjustable		FD2-30560	n/c	Stroller Handle Extension - Width Adjustable, Removable		FD2-30590	\$ 95
Not available with Straight Back Posts.							
Push Button, Angle-Adjustable Stroller Handle Extension		FD2-30570	\$ 112	Heavy Duty Push Button, Angle-Adjustable Stroller Handle Extension		FD2-30575	\$ 179
Available on wheelchair frames 15W & smaller only. Plastic hinge up to 200° range of adjustment.							
Not removable, but does allow frame to fold.							
Individual Stroller Handle Extensions Removable - Pair		FD2-30517	\$ 110				
Not available with Straight Back Posts.							
Available on any size frame. Metal hinge up to 180° range of adjustment.							
Not removable, but does allow frame to fold.							

Description	hccps	Part No.	Retail	Description	hccps	Part No.	Retail
Footrests							
Hangers							
75° Pop-Up Swing Away Hangers		FD2-30280	n/c	75° Latch Style Swing Away Hangers		FD2-30282	n/c
90° Pop-Up Swing Away Hangers		FD2-30281	n/c	90° Latch Style Swing Away Hangers		FD2-30283	n/c
<i>Not available with 8" Telescoping Extensions.</i>				<i>Not available with 8" Telescoping Extensions.</i>			
90° Pop-Up Swing Away Elevating Legrests (ELRs)	(E0990)	FD2-30279	\$ 295	Omit Legrest Hangers & Footrests		FD2-33000	

Footplates & Footboards							
Aluminum Angle Adj. Flip-up Footplates	(K0040)	FD2-36033	\$ 190	Aluminum Angle Adjustable Foot-board Removable	(K0040)	FD2-36029	\$ 190
<i>Does not include Heel Loops, select below.</i>							
Composite Flip-Up		FD2-17070	n/c	Omit Footrest Plates		FD2-36404	

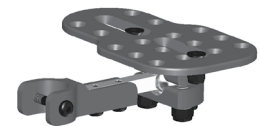
Footrest / Extension Lengths

Extension/Hanger	75° Pop	75° Lch	90° Pop	90° Lch	ELR (90°)
Hanger Only	6"-8"	5.5"-8.5"	4"-8"	4"-8"	6"-12"
High Mount	N/A	N/A	1.5"-3"	N/A	N/A
4.5" H D Ext.	9"-12"	9.5"-12.5"	9"-12"	9"-12"	13"-15"
6.5" H D Ext.	9"-15"	9.5"-15.5"	9"-15"	9"-15"	13"-17"
4" Adjustable	10"-13"	9.5"-12.5"	11"-13"	10"-13"	13"-15"
6" Adjustable	12"-15"	10.5"-14.5"	13"-15"	12"-15"	13"-18"
8" Adjustable	14"-17"	12.5"-16.5"	N/A	N/A	14"-20"
10" Adjustable	16"-19"	14.5"-18.5"	N/A	N/A	16"-22"

MAPS Footrest / Extension Lengths

Extension/Hanger	75° Pop	75° Lch	90° Pop	90° Lch	ELR (90°)
Hanger Only	5.5"-7.5"	5"-8"	5.5"-7.5"	4.5"-7.5"	4.5"- 8.5" & 11.5"
High Mount	N/A	N/A	N/A	N/A	N/A
4.5" H D Ext.	8.5"-11.5"	9"-12"	8.5"-11.5"	8.5"-11.5"	12.5"-14.5"
6.5" H D Ext.	8.5"-13.5"	9"-14"	8.5"-13.5"	8.5"-13.5"	12.5"-16.5"
4" Adjustable	8.5"-11.5"	9"-12"	9.5"-11.5"	8.5"-11.5"	12.5"-14.5"
6" Adjustable	10.5"-13.5"	10"-14"	11.5"-13.5"	8.5"-13.5"	12.5"-17.5"
8" Adjustable	12.5"-15.5"	12"-16"	N/A	N/A	13.5"-19.5"
10" Adjustable	14.5"-17.5"	14"-18"	N/A	N/A	15.5"-21.5"

Length is measured from top of footrest plate to top of seat rail. Without extensions bottom hanger hole not accessible for hardware. Heavy duty extensions do not telescope adjust. Footrests adjust vertically in length on heavy duty extension tubes.



Footplate Options							
MAPS (Multi Axis Positioning System)		FD2-36040	\$ 325	Heel Loops	(E0951)	FD2-36022	\$ 45
<i>Requires selection of Aluminum Angle Adjustable Footplates. Not compatible with Composite footplates or Aluminum Footboard. Not compatible with Seating Dynamics hangers.</i>				Calf Strap - Webbing	(K0038)	FD2-36024	\$ 45

Hanger Extension Options							
4" Telescoping Extensions		FD2-30285	n/c	6" Telescoping Extensions		FD2-30286	n/c
8" Telescoping Extensions		FD2-30287	n/c				
<i>Not available with all 90° hangers.</i>							
4.5" Heavy Duty Extensions		FD2-36402	\$ 58	6.5" Heavy Duty Extensions		FD2-36403	\$ 68
<i>Heavy duty extensions do not telescope adjust. Footrests adjust vertically in length on heavy duty extension tubes.</i>							
High Mount Clamp & Tubes		FD2-36410	\$ 102	Clear Selection			

Armrests

Back Post Mounted Armrests							
Omit Armrests							
<i>Foam wrap pad STD on all back post mounted armrests..</i>							
10.5" Flip-Back		FD2-38204	n/c	10.5" Flip-Back Locking	(E0973)	FD2-38201	\$ 265
13.5" Flip-Back		FD2-38202	n/c	13.5" Flip-Back Locking	(E0973)	FD2-38200	\$ 265
10.5" to 13.5" Flip-Back Locking, Telescoping	(E0973)	FD2-38210	\$ 285	17" to 20" Flip-Back Locking, Telescoping	(E0973)	FD2-38215	\$ 285
<i>Full length pad on 13.5" or longer armrests only.</i>							

Frame Mounted Armrests							
Single Post Height Adjustable, Removable - Low	(E0973)	FD2-38217	\$ 285	Single Post Height Adjustable, Removable - Standard	(E0973)	FD2-38203	\$ 285
<i>Not available with seat sling</i>				<i>Not available with seat sling</i>			

Arm Pad Options							
Desk Length Pads		FD2-38213	n/c	Full Length Pads		FD2-38214	n/c
				<i>13.5" or longer armrests only.</i>			

Description	hccps	Part No.	Retail	Description	hccps	Part No.	Retail
-------------	-------	----------	--------	-------------	-------	----------	--------

Armrest Heights

Armrest and Pad	Foam	Desk	Full
Flip Back	6.5" - 11.5"	7.5" - 12.5"	7.5" - 12.5"
Flip Back Locking	6.5" - 11.5"	7.5" - 12.5"	7.5" - 12.5"
Telescoping Flip Back	6.5" - 11.5"	7.5" - 12.5"	7.5" - 12.5"
Flip Back Locking Telescoping	6.5" - 11.5"	7.5" - 12.5"	7.5" - 12.5"
Single Post Height Adj. Short		8" - 14"	8" - 14"
Single Post Height Adj. Tall		10" - 16"	10" - 16"

All heights from top of seat frame to top of armrest pad.



Wheel/Caster Seat Rail to Floor Heights

Rear Wheel	Caster Wheel				
	3"	4"	5"	6"	7"
12"	14"-14.5"	15"	17"	17.5"	
16"	13"-14.5"	13.5"-14"	14"-14.5"	14.5"-15"	15"-15.5"
18"	14"-15.5"	15.5"	16"	16.5"	17"
20"	16"-17.5"	15"	15.5"-17.5"	17"-17.5"	18"
22"	15.5"	16"-17"	16.5"-17.5"	17"-18.5"	18"-18.5"
24"	16"	16.5"-17.5"	17"-18"	17.5"-18.5"	18"-19"

Clear selection

Use chart to determine seat rail to floor height. Caster sizes may vary slightly in height by type. Seat rail to floor heights are approximate, and are impacted by wheel type, caster size and braking choice. Heights can vary +/- 1/4". Seat pan choice increases seat rail to floor height 3/8" to 3/4".

Casters

3" x 1" Polyurethane	FD2-34888	n/c	3" Polyurethane Light-Up	FD2-34111	\$ 87
4" x 1" Polyurethane	FD2-40000	n/c	4" x 1.4" Poly, Aluminum Mag	FD2-43000	\$ 125
5" x 1" Polyurethane	FD2-34555	n/c	5" Polyurethane Light-Up	FD2-35050	\$ 101
5" x 1.5" Polyurethane	FD2-34222	\$ 87	5" x 1.4" Poly, Aluminum Mag	FD2-42000	\$ 125
6" x 1" Polyurethane	FD2-34666	n/c	6" x 1.4" Poly, Aluminum Mag	FD2-44000	\$ 125
6" x 1.5" Polyurethane	FD2-34999	\$ 87	6" x 2" Polyurethane, Treaded	FD2-34444	\$ 97
7" x 1" Polyurethane	FD2-34777	n/c	7" x 2" Foam Filled	FD2-34200	\$ 200

7" casters not available with 12" mag wheels.

Rear Wheels

Mags	Spoke
12" Mag Wheel	16" Spoke Wheel - Black w/ Black Tire
12" mag wheels not available with 7" casters.	18" Spoke Wheel - Black w/ Black Tire
16" Mag Wheel	20" Spoke Wheel - Aluminum Handrim
18" Mag Wheel	22" Spoke Wheel - Aluminum Handrim
20" Mag Wheel - Aluminum Handrim	24" Spoke Wheel - Aluminum Handrim
22" Mag Wheel - Aluminum Handrim	20", 22" & 24" Spoke Wheels not available with drum brakes. Spoke wheels not available with plastic coated handrims.
24" Mag Wheel - Aluminum Handrim	

Tire Options

Pneumatic Tire	FD2-31040	\$ 85
Pneumatic Tire with Airless Insert (E2213)	FD2-31000	\$ 85
Low Profile Polyurethane Tire (E2218)	FD2-31045	n/c

12" Mag wheel only, not available with drum brakes

Handrim Options

Plastic Coated Handrims	FD2-31005	\$ 119
20", 22" & 24" Mag wheels only, not available with drum brakes		
Omit Handrims	FD2-31006	

Wheel Locks

Standard	Drum Lock
Push to Lock	Includes manual wheel locks to be used with public transportation. Not available with 12" mag wheels with low pro poly tires. Not Available with 20", 22" & 24" Spoke Wheels.
Pull to Lock	Hand Activated Brake and Wheel (E2228) FD2-30275 \$ 1000 Lock System

Wheel Lock Options

Extension Handles (E0961)	FD2-31801	\$ 75
---------------------------	-----------	-------

Description	hccps	Part No.	Retail	Description	hccps	Part No.	Retail
-------------	-------	----------	--------	-------------	-------	----------	--------

Anti-Tippers

Anti-Tip Assembly - Fixed	(E0971)	FD2-31600	\$ 125	Anti-Tip Assembly - Swing-Away	(E0971)	FD2-31602	\$ 125
---------------------------	---------	-----------	--------	--------------------------------	---------	-----------	--------

Seat Pans

ALL seat pans include 2" x 2" notches for growth adjustment.

Non-Adjustable

Fixed Solid Seat Pan - Composite	(E2231)	FD2-39010	\$ 170
----------------------------------	---------	-----------	--------

ALL Bolteron seat pans are made to fit frame dimensions unless specified below.

Seat Width _____" X Seat Depth _____"

Fixed Solid Seat Pan - Aluminum	(E2231)	FD2-39030	\$ 200
---------------------------------	---------	-----------	--------

Fixed Seat Pan raises the effective seat to floor height by 1/2".

Available in the following sizes ONLY:

- 10" wide x 12" deep
- 12" wide x 14" deep
- 14" wide x 16" deep
- 16" wide x 18" deep
- 18" wide x 18" deep

Adjustable

Fixed, Width Adjustable Solid Seat Pan - Aluminum	(E2231)	FD2-39040	\$ 290
---	---------	-----------	--------

Fixed Seat Pan raises the effective seat to floor height by 1/2".

Width Adjustable Solid Seat Pan adjusts 2" in width (in 1" increments) by assembly hardware to grow with FD2 frame.

Available in the following sizes ONLY:

- 10"-12" wide x 12" deep
- 12"-14" wide x 14" deep
- 14"-16" wide x 16" deep
- 16"-18" wide x 18" deep

Mounting Hardware Options

Use to convert fixed seat pan to removable.

Removable Pan Hardware Kit	(K0108)	FD2-EZLITE	\$ 207
----------------------------	---------	------------	--------

Removable Seat Pan Hardware raises the effective seat to floor height by 5/8".

Includes 4-points of EZ-Lite mounting hardware, 2 each frame stopper clamps.

Accessories

Clothing Guards - Fabric		FD2-CGF	\$ 75	Clothing Guards - Rigid		FD2-CGR	\$ 128
Footrest Hanger Pads - Pair	(K0108)	SFDI-9HP	\$ 97	Freedom Backpack	(K0108)	FD2-10900	\$ 60

Wrap-around pads made from black neoprene.

Black Nylon only with Freedom Designs logo. Monogramming is not available on Freedom Backpack.

Flip-Down Rigidizing Bar	(K0108)	FD2-23210	\$ 175
--------------------------	---------	-----------	--------

Mounts to back post tubes to add rigidity to frame. Does NOT adjust in width to grow with frame.

Freedom Canopy - Flip-Back	(K0108)	FD2-10905	\$ 134
----------------------------	---------	-----------	--------

Canopy assembly includes removable mounting hardware. Available in black only with Freedom Designs logo. Includes rear flap with zippered storage pocket and clear-view window.

Specifications:

Frame Style	Ultra-light Active Manual
Frame Widths	11" - 18"
Overall Width	Base width + 7.5" (all wheels without drum lock) Base width + 8.5" (with drum lock except 16" & 18" mag wheel) Base width + 9.5" (with drum brake and 16" or 18" mag wheel)
Seat Widths	11" - 18"
Seat Depths	15" - 21"
Back Heights	20", 23", 26"
Adjustable Angle Back	90°, 100°, 110°, 120°
Recline Back	N/A
Weight Limit	250 LBS.
Transport Weight	
Warranty	Lifetime on frame

HCPCS Codes:

are provided based on verification through PDAC or our interpretation of the code definitions. The use of HCPCS codes does not ensure coverage or payment. For coverage information, verify the appropriate payer's coverage policy.