



Adult Manual Wheelchair

Clear Form

Email Form to
Customer Service

2241 N Madera Rd Simi Valley, CA 93065 Phone: (800) 331-8551 Fax: (888) 582-1509 www.freedomdesigns.com email: customerservice@freedomdesigns.com

Date: _____ Buyer: _____ Quote Order Install Seating? PinDot Matrix
 Company: _____ PO#: _____
 Marked For: _____ Location: _____
 Email: _____ Phone: _____

Description	hccps	Part No.	Retail	Description	hccps	Part No.	Retail
-------------	-------	----------	--------	-------------	-------	----------	--------

A seating system must be purchased separately. No seating system is provided with the NXT frame. No seat or back upholstery is available as an option.

Transport Optional				Transport Included			
NXT Adult Folding	(E1161)	NXT-30302	\$3025	NXT Adult Folding	(E1161)	NXT-30303	\$3175
NXT Adult Rigid	(E1161)	NXT-30312	\$3025	NXT Adult Rigid	(E1161)	NXT-30313	\$3175
Transportation Option selected separately below. Includes Freedom Future Fit Program				Includes Freedom Future Fit Program			
Transport Brackets		NXT-99998	\$ 300				

Must be installed by Freedom Designs manufacturing.
 Freedom's combination of customized seating and wheelchair frames are WC19 crash test approved in accordance with RESNA WC-4: 2012 Section 19, Annexes A, B, C & E as well as ISO 7176-19 (2008) Annexes A, C & D.
 Most Freedom seating, hardware, and positioning accessories have been WC20 tested and approved for transit.

Frame Dimensions

Frame Width Setting & Cross Brace

14"	15"	16"	Adjusts 14" to 16"	NXT-30240	n/c
15"	16"	17"	Adjusts 15" to 17"	NXT-30290	n/c
16"	17"	18"	Adjusts 16" to 18"	NXT-30260	n/c
17"	18"		Adjusts 17" to 18"	NXT-30261	n/c
18"			Not width adjustable	NXT-30262	n/c
19"				NXT-30263	n/c
20"		(E2201)		NXT-30264	\$ 500

Frame widths measures across and from outside of seat frame tubes.

Frame Depth & Back Post Setting

Medium Frame, Low Tilt Seat rail to floor height range is 12.5" to 16.5". 22" & 24" wheels not available with low tilt

14" n/c	15" n/c	16" n/c	17" n/c	18" n/c	19" n/c	20" \$ 550 (E2203)	21" \$ 550 (E2203)	22" \$ 990 (E2204)
					Requires 2" Extension	Includes 2" Extension	Includes 4" Extension	Includes 4" Extension

Medium Frame, Tall Tilt Seat rail to floor height range is 14" to 18".

14" n/c	15" n/c	16" n/c	17" n/c	18" n/c	19" n/c	20" \$ 550 (E2203)	21" \$ 550 (E2203)	22" \$ 990 (E2204)
					Requires 2" Extension	Includes 2" Extension	Includes 4" Extension	Includes 4" Extension

Long Frame, Tall Tilt Seat rail to floor height range is 14" to 18".

16" n/c	17" n/c	18" n/c	19" n/c	20" \$ 550 (E2203)	21" \$ 550 (E2203)	22" \$ 990 (E2204)	23" \$ 990 (E2204)	24" \$ 990 (E2204)	25" \$ 990 (E2204)	26" \$ 990 (E2204)
							Includes 2" Extension	Includes 2" Extension	Includes 4" Extension	Includes 4" Extension

Seat Rail Extensions

2" Extension - Pair	(K0108)	NXT-30525	\$ 41	Specify Back Post Location (if other than specified above) _____"
4" Extension - Pair	(K0108)	NXT-30531	\$ 41	

Description	hccps	Part No.	Retail	Description	hccps	Part No.	Retail
Seat Rail Options							
LEAF - Lower Extremity Accommodation Frame				SRO - Seat Rail Only			
<i>Not available with ALL Contracture & 3D Dynamic footrest systems.</i>							
LEAF Seat Frame- Pair	(K0108)	NXT-30324	\$ 775	SRO Seat Frame- Pair	(K0108)	NXT-30325	\$ 325
<i>Front frame angle adjusts 22° from midline for abduction, adduction, and windswept lower extremity positioning. Seat frame(s) can be individually repositioned for up to a 2" leg length discrepancy.</i>				<i>SRO is manufactured without standard footrest hanger attachments.</i>			
5° Anterior Tilt Seat Frame		NXT-30276	n/c				
<i>Limits posterior tilt to 40°. Includes split collars for adjustment. Medium with Tall Tilt and Long frames only.</i>							

Vent Options

Vent Tray - Fixed	(E1029)	11-7000	\$ 461	Back Post Mounted Vent Bracket	(E1029)	11-1100	\$ 550
<i>Not with Foot activated tilt. For LP10 style vent, base must be 16" or greater. Tray measures 4" narrower than the width of the base frame and 16" deep</i>				<i>For LTV vents ONLY. Does NOT include dovetail bracket. Weight limit 15 lbs.</i>			
Battery Tray - Fixed	(K0108)	11-8000	\$ 450	Quick Release Tray Hardware	(K0108)	563	\$ 286
<i>Tray measures 4" narrower than the width of the base frame and 10" deep</i>							

Auxillary Device Mounts

O2 Holder - Aluminum w/ QR Hdwe	(K0108)	11-3100	\$ 548	IV Pole w/ Mounting Hardware	(K0108)	11-4000	\$ 270
---------------------------------	---------	---------	--------	------------------------------	---------	---------	--------

Tilt Activations

Dual Lever Hand Activated Tilt		NXT-30272	n/c	Foot Activated Tilt		NXT-30273	n/c
				<i>Not available with vent tray.</i>			

Frame Colors

Sugar Cookie		n/c	Blue Blast		n/c
Neon Yellow		n/c	Electric Blue		n/c
Yellow		n/c	Galaxy Blue		n/c
Bright Pink		n/c	Passion Purple		n/c
Pink Parfait		n/c	Octane Orange		n/c
Sugar Plum		n/c	Red Sunset		n/c
Candy Violet		n/c	Really Red		n/c
Candy Raspberry		n/c	Fiery Red		n/c
Extreme Green		n/c	Twilight		n/c
Sparkle Green		n/c	Stormy Gray		n/c
Mystic Teal		n/c	Black		n/c
Pacific Blue		n/c	Color to be Determined		

Back Posts**Back Post Options**

Fold-Down Back Posts		NXT-30545	n/c	Dynamic Rocker Back - Seating Dynamics	(K0108)	NXT-30532	\$1985
				<i>Angle adjustable from 72° to 108° in 6° increments. Can be locked-out when needed. Includes a set of 4 elastomers in different durometers to allow spring adjustment in the field.</i>			

Push Handle Options

90° Bend Back Post Tubes		NXT-30518	n/c	Straight Back Post Tubes		NXT-30544	n/c
				<i>Requires selection of Push Button Angle Adjustable Stroller Handle (NXT-30570 or NXT-30575).</i>			

Push Handle Height

Short - 20" High		NXT-30515	n/c	Tall - 26" High		NXT-30516	n/c
Medium - 23" High		NXT-30514	n/c				

Notes:

Description	hccps	Part No.	Retail	Description	hccps	Part No.	Retail
-------------	-------	----------	--------	-------------	-------	----------	--------

Push Handle Extension Options



All push handle extensions except NXT-30560 add approximately 6.5" to push handle height. All push handle extensions except Individual include a black neoprene wrap around pad.

Push Handle Extension - Width Adjustable	NXT-30560	n/c	Stroller Handle Extension - Width Adjustable, Removable	NXT-30590	\$ 95
Not available with Straight Back Posts.			Not available with Straight Back Posts.		
Push Button, Angle-Adjustable Stroller Handle Extension	NXT-30570	\$ 112	Heavy Duty Push Button, Angle-Adjustable Stroller Handle Extension	NXT-30575	\$ 179
Available on wheelchair frames 15W & smaller only. Plastic hinge up to 200° range of adjustment. NXT-30570 or NXT-30575 required with Straight Back Post Tubes (NXT-30544). Not removable, but does allow frame to fold.			Available on any size frame. Metal hinge up to 180° range of adjustment. NXT-30570 or NXT-30575 required with Straight Back Post Tubes (NXT-30544). Not removable, but does allow frame to fold.		
Individual Stroller Handle Extensions Removable - Pair	NXT-30517	\$ 110			
Not available with Straight Back Posts.					

Footrests

Hangers

75° Pop-Up Swing Away Hangers	NXT-30280	n/c	75° Latch Style Swing Away Hangers	NXT-30282	n/c
90° Pop-Up Swing Away Hangers	NXT-30281	n/c	90° Latch Style Swing Away Hangers	NXT-30283	n/c
Not available with 8" or 10" Telescoping Extensions.			Not available with 8" or 10" Telescoping Extensions.		
90° Pop-Up Swing Away Elevating Legrests (ELRs)	(E0990) NXT-30279	\$ 295	Omit Legrest Hangers & Footrests	NXT-33000	
Not available with all Telescoping extensions.					

Footplates & Footboards

Aluminum Angle Adj. Flip-up Footplates	(K0040) NXT-36033	\$ 190	Aluminum Angle Adjustable Foot-board Removable	(K0040) NXT-36029	\$ 190
Does not include Heel Loops, select below.					
Composite Flip-Up	NXT-17070	n/c	Omit Footrest Plates	NXT-36404	

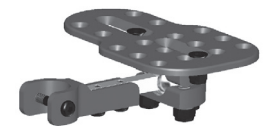
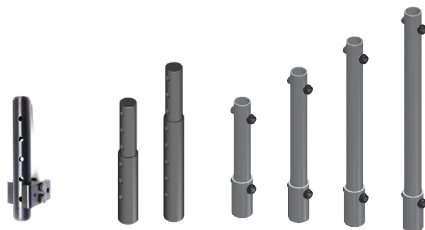
Footrest / Extension Lengths

Extension/Hanger	75° Pop	75° Lch	90° Pop	90° Lch	ELR (90°)
Hanger Only	6"-8"	5.5"-8.5"	4"-8"	4"-8"	6"-12"
High Mount	N/A	N/A	1.5"-3"	N/A	N/A
4.5" H D Ext.	9"-12"	9.5"-12.5"	9"-12"	9"-12"	13"-15"
6.5" H D Ext.	9"-15"	9.5"-15.5"	9"-15"	9"-15"	13"-17"
4" Adjustable	10"-13"	9.5"-12.5"	11"-13"	10"-13"	13"-15"
6" Adjustable	12"-15"	10.5"-14.5"	13"-15"	12"-15"	13"-18"
8" Adjustable	14"-17"	12.5"-16.5"	N/A	N/A	14"-20"
10" Adjustable	16"-19"	14.5"-18.5"	N/A	N/A	16"-22"

MAPS Footrest / Extension Lengths

Extension/Hanger	75° Pop	75° Lch	90° Pop	90° Lch	ELR (90°)
Hanger Only	5.5"-7.5"	5"-8"	5.5"-7.5"	4.5"-7.5"	4.5"- 8.5" & 11.5"
High Mount	N/A	N/A	N/A	N/A	N/A
4.5" H D Ext.	8.5"-11.5"	9"-12"	8.5"-11.5"	8.5"-11.5"	12.5"-14.5"
6.5" H D Ext.	8.5"-13.5"	9"-14"	8.5"-13.5"	8.5"-13.5"	12.5"-16.5"
4" Adjustable	8.5"-11.5"	9"-12"	9.5"-11.5"	8.5"-11.5"	12.5"-14.5"
6" Adjustable	10.5"-13.5"	10"-14"	11.5"-13.5"	8.5"-13.5"	12.5"-17.5"
8" Adjustable	12.5"-15.5"	12"-16"	N/A	N/A	13.5"-19.5"
10" Adjustable	14.5"-17.5"	14"-18"	N/A	N/A	15.5"-21.5"

Length is measured from top of footrest plate to top of seat rail. Without extensions bottom hanger hole not accessible for hardware. Heavy duty extensions do not telescope adjust. Footrests adjust vertically in length on heavy duty extension tubes.



Footplate Options

MAPS (Multi Axis Positioning System)	NXT-36040	\$ 325	Heel Loops	(E0951) NXT-36022	\$ 45
Requires selection of Aluminum Angle Adjustable Footplates. Not compatible with Composite footplates or Aluminum Footboard. Not compatible with Seating Dynamics hangers.			Calf Strap - Webbing	(K0038) NXT-36024	\$ 45

Hanger Extension Options

4" Telescoping Extensions	NXT-30285	n/c	6" Telescoping Extensions	NXT-30286	n/c
8" Telescoping Extensions	NXT-30287	n/c	10" Telescoping Extensions	NXT-30288	n/c
Not available with all 90° hangers.			Not available with all 90° hangers.		
4.5" Heavy Duty Extensions	NXT-36402	\$ 58	6.5" Heavy Duty Extensions	NXT-36403	\$ 68
Heavy duty extensions do not telescope adjust. Footrests adjust vertically in length on heavy duty extension tubes.					
High Mount Clamp & Tubes	NXT-36410	\$ 102	Clear Selection		

Description	hccps	Part No.	Retail	Description	hccps	Part No.	Retail
-------------	-------	----------	--------	-------------	-------	----------	--------

Specialized Footrests

ALL legrest measurements are from the seat rail to footplate. Not available with LEAF or SRO seat rail options. Frame and/or front caster choice may limit adjustment range and/or cause interference.

Contracture Footrest Hangers

Super Contracture for frames 14" wide and greater only.

Contracture Short - 11" to 15" <i>Includes short hanger extension.</i>	NXT-30291-2	\$3570	Contracture Long - 15" to 19" <i>Includes long hanger extension.</i>	NXT-30292-2	\$3570
---	-------------	--------	---	-------------	--------

3D Dynamic Footrest Hangers

3D Dynamic Footrest - Hi Pivot	NXT-30297-2	\$6215	3D Dynamic Footrest - STD	NXT-30298-2	\$5775
--------------------------------	-------------	--------	---------------------------	-------------	--------

Dynamic Footrest Extension Options

Dynamic Adj Plantar/Dorsi Ext, 0-2"	NXT-6405-01	n/c	Dynamic Adj Plantar/Dorsi Ext, 1-3"	NXT-6409-01	n/c
Dynamic Adj Plantar/Dorsi Ext, 2-4"	NXT-6406-01	n/c	Dynamic Adj Plantar/Dorsi Ext, 3-5"	NXT-6410-01	n/c
Dynamic Adj Plantar/Dorsi Ext, 4-6"	NXT-6407-01	n/c	Dynamic Adj Plantar/Dorsi Ext, 5-7"	NXT-6411-01	n/c
Dynamic Adj Plantar/Dorsi Ext, 6-8"	NXT-6408-01	n/c			

Specialized Footplates

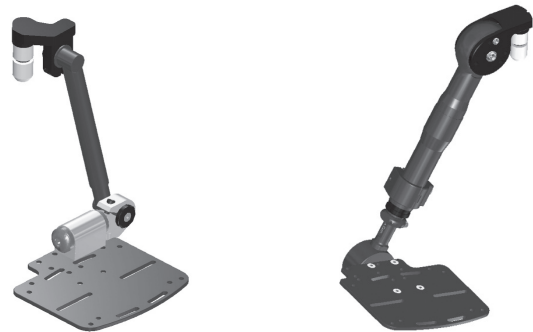
4" x 6" HD Aluminum Footplates	NXT-6503	n/c	5" x 8" HD Aluminum Footplates <i>For frames 16" wide and greater only.</i>	NXT-6504	n/c
6" x 10" HD Aluminum Footplates	NXT-6505	n/c			

For frames 18" wide and greater only. Not available with Contracture Hangers

Specialized Footrest Seat Rail to Footplate Measurements

Part Number	Extension	Super Contracture	3D Dynamic Hi Pivot	3D Dynamic STD
6402-01	Short	10.5" - 13.5"		
6402-02	Long	13.5" - 18.5"		
6405-01	0"-2" Extension		6.25" - 10.75"	12.75-15.25"
6409-01	1"-3" Extension		7.25-11.75"	13.75-16.25"
6406-01	2"-4" Extension		8.25-12.75"	14.75-17.25"
6410-01	3"-5" Extension		9.25-13.75"	15.75-18.25"
6407-01	4"-6" Extension		10.25-14.75"	16.75-19.25"
6411-01	5"-7" Extension		11.25-15.75"	17.75-20.25"
6508-01	6"-8" Extension		12.25-16.75"	18.75-21.25"

Length measured from top of footrest plate to top of seat rail. 3D HiPivot includes 4.5" of length adjustment, 3D includes 2.5" of length adjustment.



Armrests

Back Post Mounted Armrests

Omit Armrests

Foam wrap pad STD on all back post mounted armrests..

10.5" Flip-Back	NXT-38204	n/c	10.5" Flip-Back Locking	(E0973) NXT-38201	\$ 265
13.5" Flip-Back	NXT-38202	n/c	13.5" Flip-Back Locking	(E0973) NXT-38200	\$ 265
10.5" to 13.5" Flip-Back Locking, Telescoping	(E0973) NXT-38210	\$ 285	17" to 20" Flip-Back Locking, Telescoping	(E0973) NXT-38215	\$ 285

Full length pad on 13.5" or longer armrests only.

Frame Mounted Armrests

Single Post Height Adjustable, Removable - Low	(E0973) NXT-38217	\$ 285	Single Post Height Adjustable, Removable - Standard	(E0973) NXT-38203	\$ 285
Dual Post Fixed Height Removable	NXT-38205	n/c	Dual Post Flip-Back Height Adjustable, Removable	(E0973) NXT-38206	\$ 295

22" & 24" Wheels not available with dual post armrests

Arm Pad Options

Desk Length Pads	NXT-38213	n/c	Full Length Pads <i>13.5" or longer armrests only.</i>	NXT-38214	n/c
------------------	-----------	-----	---	-----------	-----

Armrest Heights

Armrest and Pad	Foam	Desk	Full
Flip Back	6.5" - 11.5"	7.5" - 12.5"	7.5" - 12.5"
Flip Back Locking	6.5" - 11.5"	7.5" - 12.5"	7.5" - 12.5"
Telescoping Flip Back	6.5" - 11.5"	7.5" - 12.5"	7.5" - 12.5"
Flip Back Locking Telescoping	6.5" - 11.5"	7.5" - 12.5"	7.5" - 12.5"
Single Post Height Adj. Short		8" - 14"	8" - 14"
Single Post Height Adj. Tall		10" - 16"	10" - 16"
Dual Post Fixed Height		9.5"	9.5"
Dual Post Flip Back Height Adj.		9" - 13"	9" - 13"

All heights from top of seat frame to top of armrest pad.



Description		hccps	Part No.	Retail	Description		hccps	Part No.	Retail			
Wheel/Caster Seat Rail to Floor Heights					Wheel/Caster Seat Rail to Floor Heights							
Rear Wheel	Tilt Pivot	Caster Wheel					Rear Wheel	Tilt Pivot	Caster Wheel			
		3"	4"	5"	6"	7"			3"	4"	5"	6"
12"	Low	12.5"-13"	13.5	15.5"	16"		20"	Low	14"-15"	14.5"-15.5"	15.5"-16"	16.5"
	Tall	14"-14.5"	15"	17"	17.5"			Tall	15.5"-16.5"	16"-17"	17"-17.5"	18"
16"	Low	12.5"-13"	13.5"-14"	14.5"	16"	16.5"	22"	Low				
	Tall	14"-14.5"	15"-15.5"	16"	17.5"	18"		Tall	16.5"	16.5-17"	17"-17.5"	18"
18"	Low	12.5"-13"	13.5"-14.5"	14.5"-15.5"	15.5"		24"	Low				
	Tall	14"-14.5"	15"-16.5"	16"-17"	17"			Tall				17.5"

Clear selection

Use chart to determine seat rail to floor height. Caster sizes may vary slightly in height by type. Seat rail to floor heights are approximate, and are impacted by wheel type, caster size and braking choice. Heights can vary +/- 1/4". Seat pan choice increases seat rail to floor height 3/8" to 3/4".

Casters

3" x 1" Polyurethane	NXT-34888	n/c	3" Polyurethane Light-Up	NXT-34111	\$ 87
4" x 1" Polyurethane	NXT-40000	n/c	4" x 1.4" Poly, Aluminum Mag	NXT-43000	\$ 125
5" x 1" Polyurethane	NXT-34555	n/c	5" Polyurethane Light-Up	NXT-35050	\$ 101
5" x 1.5" Polyurethane	NXT-34222	\$ 87	5" x 1.4" Poly, Aluminum Mag	NXT-42000	\$ 125
6" x 1" Polyurethane	NXT-34666	n/c	6" x 1.4" Poly, Aluminum Mag	NXT-44000	\$ 125
6" x 1.5" Polyurethane	NXT-34999	\$ 87	6" x 2" Polyurethane, Treaded	NXT-34444	\$ 97
7" x 1" Polyurethane	NXT-34777	n/c	7" x 2" Foam Filled	NXT-34200	\$ 200

7" casters not available with 12" mag wheels.

Rear Wheels

Mags

12" Mag Wheel	NXT-31525	n/c
12" mag wheels not available with 7" casters.		
16" Mag Wheel	NXT-31530	\$ 41
18" Mag Wheel	NXT-31533	\$ 41
20" Mag Wheel - Aluminum Handrim	NXT-31527	n/c
22" Mag Wheel - Aluminum Handrim	NXT-31528	n/c
24" Mag Wheel - Aluminum Handrim	NXT-31529	n/c
22" & 24" Wheels not available with dual post armrests.		

Spoke

16" Spoke Wheel - Black w/ Black Tire	NXT-31535	n/c
18" Spoke Wheel - Black w/ Black Tire	NXT-31538	n/c
20" Spoke Wheel - Aluminum Handrim	NXT-31540	\$ 204
22" Spoke Wheel - Aluminum Handrim	NXT-31541	\$ 204
24" Spoke Wheel - Aluminum Handrim	NXT-31542	\$ 204
20", 22" & 24" Spoke Wheels not available with drum brakes. 22" & 24" Wheels not available with dual post armrests. Spoke wheels not available with plastic coated handrims.		

Tire Options

Pneumatic Tire	NXT-31040	\$ 85
Pneumatic Tire with Airless Insert (E2213)	NXT-31000	\$ 85
Low Profile Polyurethane Tire (E2218)	NXT-31045	n/c
12" Mag wheel only, not available with drum brakes		

Handrim Options

Plastic Coated Handrims	NXT-31005	\$ 119
20", 22" & 24" Mag wheels only, not available with drum brakes		
Omit Handrims	NXT-31006	

Wheel Locks

Standard

Push to Lock	NXT-31501	n/c
Pull to Lock	NXT-31506	n/c

Wheel Lock Options

Extension Handles (E0961)	NXT-31801	\$ 75
---------------------------	-----------	-------

Drum Lock

Includes manual wheel locks to be used with public transportation. Not available with 12" mag wheels with low pro poly tires. Not Available with 20", 22" & 24" Spoke Wheels.		
Foot Activated Wheel Lock	NXT-31508	n/c
Not available with ALL vent and battery trays.		
Hand Activated Brake and Wheel Lock System (E2228)	NXT-30275	\$ 1000

Anti-Tippers

Curb Assist Anti-Tip Assembly Flip-Up, Adjustable (E0971)	NXT-31600	\$ 125
Pair includes one anti-tip tube with curb assist feature.		

Standard Anti-Tip Assembly Flip-Up, Adjustable (E0971)	NXT-31603	\$ 125
--	-----------	--------

Description	hccps	Part No.	Retail	Description	hccps	Part No.	Retail
-------------	-------	----------	--------	-------------	-------	----------	--------

Seat Pans

ALL seat pans include 2" x 2" notches for growth adjustment.

Non-Adjustable

Fixed Solid Seat Pan - Composite (E2231) NXT-39010 \$ 170

ALL Bolteron seat pans are made to fit frame dimensions unless specified below.

Seat Width _____" X Seat Depth _____"

Fixed Solid Seat Pan - Aluminum (E2231) NXT-39030 \$ 200

Fixed Seat Pan raises the effective seat to floor height by 1/2".

Available in the following sizes ONLY:

14" wide x 16" deep 18" wide x 18" deep
 16" wide x 18" deep

Adjustable

Fixed, Width Adjustable Solid Seat (E2231) NXT-39040 \$ 290
 Pan - Aluminum

Fixed Seat Pan raises the effective seat to floor height by 1/2".

Width Adjustable Solid Seat Pan adjusts 2" in width (in 1" increments) by assembly hardware to grow with NXT frame.

Available in the following sizes ONLY:

14"-16" wide x 16" deep 16"-18" wide x 18" deep

Mounting Hardware Options

Use to convert fixed seat pan to removable.

Removable Pan Hardware Kit (K0108) NXT-EZLITE \$ 207

Removable Seat Pan Hardware raises the effective seat to floor height by 5/8".

Includes 4-points of EZ-Lite mounting hardware, 2 each frame stopper clamps.

Accessories

Footrest Hanger Pads - Pair (K0108) SFDI-9HP \$ 97

Wrap-around pads made from black neoprene.

Flip-Down Rigidizing Bar (K0108) NXT-23210 \$ 175

Mounts to back post tubes to add rigidity to frame. Does NOT adjust in width to grow with frame.

Freedom Backpack (K0108) NXT-10900 \$ 60

Black Nylon only with Freedom Designs logo. Monogramming is not available on Freedom Backpack.

Freedom Canopy - Flip-Back (K0108) NXT-10905 n/c

Canopy assembly includes removable mounting hardware. Available in black only with Freedom Designs logo. Includes rear flap with zippered storage pocket and clear-view window.

Notes:

Specifications:

Frame Style	Tilt-In-Space
Base Frame Widths	14' - 20"
Overall Width	Base width + 7.5" (all wheels without drum lock) Base width + 8.5" (with drum lock except 16" & 18" mag wheel) Base width + 9.5" (with drum brake and 16" or 18" mag wheel)
Seat Widths	14" - 20"
Seat Depths	14" - 26"
Back Heights	20", 23", 26"
Adjustable Angle Back	90°, 100°, 110°, 120°
Tilt Range	0° to 55°
Recline Back	N/A
Weight Limit	225 LBS.
Transport Weight	
Warranty	Lifetime on frame

Special Configurations Through Customer Service:

Asymmetrical Seat Depth Seat rails may be configured up to 4" offset

HCPCS Codes:

are provided based on verification through PDAC or our interpretation of the code definitions. The use of HCPCS codes does not ensure coverage or payment. For coverage information, verify the appropriate payer's coverage policy.