



Yes, you can.®



Freedom SPM-Mini Manual Wheelchair

Clear Form

Email Form to
Customer Service

2241 N Madera Rd Simi Valley, CA 93065 Phone: (800) 331-8551 Fax: (888) 582-1509 www.freedomdesigns.com email: customerservice@freedomdesigns.com

Date: _____ Buyer: _____ Quote Order Install Seating? PinDot Matrix
 Company: _____ PO#: _____
 Marked For: _____ Location: _____
 Email: _____ Phone: _____

Description	hccps	Part No.	Retail	Description	hccps	Part No.	Retail
-------------	-------	----------	--------	-------------	-------	----------	--------

Base Options

A seating system must be purchased separately. No seating system is provided with the SP3-Mini frame.

Transport Optional				Push Wheel Configuration			
SP3-Mini Folding	(E1238) or (K0005)	SPM-30270	\$2315	Standard Configuration - Rear Wheel Drive		SPM-STD	n/c
<i>Not available in 20" frame width.</i>							
SP3-Mini Rigid	(E1238) or (K0005)	SPM-30270R	\$2315	Reverse Configuration - Front Wheel Drive		SPM-REV	n/c
<i>Transportation Option selected separately below. Includes Freedom Future Fit Program</i>				<i>Reverse Configuration not available with any latch swing-away hangers. Reverse Configuration not available with swing-away anti-tips</i>			
Double Seat Rail Frame <i>Includes crossbrace with built-in seat rail for sling seat mounting or seating system installation. Raises Seat to Floor height 1-5/8". Not Available with 10" frame width</i>							
Single Seat Rail Frame <i>Not available with sling seat.</i>							
Transport Brackets		SPM-99998	\$ 300				
<i>Must be installed by Freedom Designs manufacturing. Freedom's combination of customized seating and wheelchair frames are WC19 crash test approved in accordance with RESNA WC-4: 2012 Section 19, Annexes A, B, C & E as well as ISO 7176-19 (2008) Annexes A, C & D. Most Freedom seating, hardware, and positioning accessories have been WC20 tested and approved for transit.</i>							

Frame Dimensions

Frame Width Setting & Cross Brace			
10"		SPM-30250	n/c
11"		SPM-30210	n/c
12"		SPM-30220	n/c
13"		SPM-30230	n/c
14"		SPM-30240	n/c
15"		SPM-30290	n/c
16"		SPM-30260	n/c
17"		SPM-30330	n/c
18"		SPM-30280	n/c

Frame widths measures across and from outside of seat frame tubes. Vent and battery trays only with 14" wide and greater frame.

Frame Size & Back Post Setting

Small Frame Length <i>Adjusts 9" to 12"</i>				Long Frame Length <i>Adjusts 11" to 14"</i>			
9"		SPM-9	n/c	11"		SPM-11	n/c
10"		SPM-10	n/c	12"		SPM-12	n/c
11"		SPM-11	n/c	13"		SPM-13	n/c
12"		SPM-12	n/c	14"		SPM-14	n/c

Notes:

Description	hccps	Part No.	Retail	Description	hccps	Part No.	Retail
Seat Upholstery Options							
Seat Sling		SPM-39011	n/c	Omit Seat Sling		SPM-39004	
Seat Sling Depth							
9"		SPM-30409	n/c				
10"		SPM-30500	n/c				
11"		SPM-30501	n/c				
12"		SPM-30502	n/c				
13"		SPM-30503	n/c				
14"		SPM-30504	n/c				
				Seat Cushion Options			
				1" Seat Cushion		SPM-39003	\$..91
				2" Seat Cushion		SPM-39007	\$..102
				<i>Includes 4# foam & black knit cover with zipper closure.</i>			

Frame Colors

Sugar Cookie		n/c	Blue Blast		n/c
Neon Yellow		n/c	Electric Blue		n/c
Yellow		n/c	Galaxy Blue		n/c
Bright Pink		n/c	Passion Purple		n/c
Pink Parfait		n/c	Octane Orange		n/c
Sugar Plum		n/c	Red Sunset		n/c
Candy Violet		n/c	Really Red		n/c
Candy Raspberry		n/c	Fiery Red		n/c
Extreme Green		n/c	Twilight		n/c
Sparkle Green		n/c	Stormy Gray		n/c
Mystic Teal		n/c	Black		n/c
Pacific Blue		n/c	Color to be Determined		

Back Posts**Back Post Options**

Fold-Down Back Posts	SPM-30545	n/c
----------------------	-----------	-----

Push Handle Options

90° Bend Back Post Tubes	SPM-30518	n/c	Straight Back Post Tubes	SPM-30544	n/c
--------------------------	-----------	-----	--------------------------	-----------	-----

Push Handle Height

Short - 20" High	SPM-30515	n/c	Tall - 26" High	SPM-30516	n/c
Medium - 23" High	SPM-30514	n/c			

Back Upholstery Options

Back Sling - Standard	SPM-39006	n/c	Omit Back Sling	SPM-39005
Back Sling - Tension Adjustable	SPM-39008	\$ 248		

Back Sling Height

10" High	SPM-30409	n/c	15" High	SPM-30409	n/c
11" High	SPM-30500	n/c	16" High	SPM-30500	n/c
12" High	SPM-30501	n/c	17" High	SPM-30501	n/c
13" High	SPM-30502	n/c	18" High	SPM-30502	n/c
14" High	SPM-30503	n/c			

Sling back height must be selected when ordering Standard or Adjustable Tension Sling Back Upholstery

Description	hccps	Part No.	Retail	Description	hccps	Part No.	Retail
-------------	-------	----------	--------	-------------	-------	----------	--------

Push Handle Extension Options



-30560



-30590



-30570



-30575



-30517

All push handle extensions except SPM-30560 add approximately 6.5" to push handle height. All push handle extensions except Individual include a black neoprene wrap around pad.

Push Handle Extension - Width Adjustable	SPM-30560	n/c	Stroller Handle Extension - Width Adjustable, Removable	SPM-30590	\$ 95
--	-----------	-----	---	-----------	-------

Not available with Straight Back Posts.

Not available with Straight Back Posts.

Push Button, Angle-Adjustable Stroller Handle Extension	SPM-30570	\$ 112
---	-----------	--------

Heavy Duty Push Button, Angle-Adjustable Stroller Handle Extension	SPM-30575	\$ 179
--	-----------	--------

Available on wheelchair frames 15W & smaller only. Plastic hinge up to 200° range of adjustment.

Available on any size frame. Metal hinge up to 180° range of adjustment.

Not removable, but does allow frame to fold.

Not removable, but does allow frame to fold.

Individual Stroller Handle Extensions Removable - Pair	SPM-30517	\$ 110
--	-----------	--------

Not available with Straight Back Posts.

Footrests

Hangers

75° Pop-Up Swing Away Hangers	SPM-30280	n/c	90° Pop-Up Swing Away Hangers	SPM-30281	n/c
-------------------------------	-----------	-----	-------------------------------	-----------	-----

Omit Legrest Hangers & Footrests

SPM-33000

Not available with 8" or 10" Telescoping Extensions.

Footplates & Footboards

Aluminum Angle Adj. Flip-up Footplates	(K0040) SPM-36033	\$ 190
--	-------------------	--------

Does not include Heel Loops, select below.

Aluminum Angle Adjustable Foot-board Removable	(K0040) SPM-36029	\$ 190
--	-------------------	--------

Composite Flip-Up	SPM-17070	n/c
-------------------	-----------	-----

Omit Footrest Plates	SPM-36404
----------------------	-----------

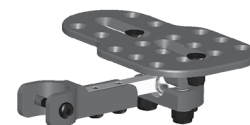
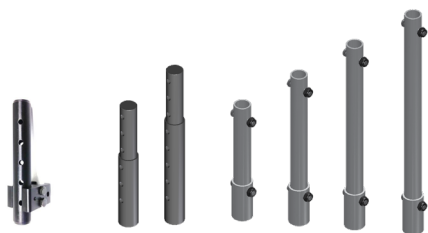
Footrest / Extension Lengths

Extension/Hanger	75° Pop	75° Lch	90° Pop	90° Lch	ELR (90°)
Hanger Only	6"-8"	5.5"-8.5"	4"-8"	4"-8"	6"-12"
High Mount	N/A	N/A	1.5"-3"	N/A	N/A
4.5" H D Ext.	9"-12"	9.5"-12.5"	9"-12"	9"-12"	13"-15"
6.5" H D Ext.	9"-15"	9.5"-15.5"	9"-15"	9"-15"	13"-17"
4" Adjustable	10"-13"	9.5"-12.5"	11"-13"	10"-13"	13"-15"
6" Adjustable	12"-15"	10.5"-14.5"	13"-15"	12"-15"	13"-18"
8" Adjustable	14"-17"	12.5"-16.5"	N/A	N/A	14"-20"
10" Adjustable	16"-19"	14.5"-18.5"	N/A	N/A	16"-22"

MAPS Footrest / Extension Lengths

Extension/Hanger	75° Pop	75° Lch	90° Pop	90° Lch	ELR (90°)
Hanger Only	5.5"-7.5"	5"-8"	5.5"-7.5"	4.5"-7.5"	4.5"- 8.5" & 11.5"
High Mount	N/A	N/A	N/A	N/A	N/A
4.5" H D Ext.	8.5"-11.5"	9"-12"	8.5"-11.5"	8.5"-11.5"	12.5"-14.5"
6.5" H D Ext.	8.5"-13.5"	9"-14"	8.5"-13.5"	8.5"-13.5"	12.5"-16.5"
4" Adjustable	8.5"-11.5"	9"-12"	9.5"-11.5"	8.5"-11.5"	12.5"-14.5"
6" Adjustable	10.5"-13.5"	10"-14"	11.5"-13.5"	8.5"-13.5"	12.5"-17.5"
8" Adjustable	12.5"-15.5"	12"-16"	N/A	N/A	13.5"-19.5"
10" Adjustable	14.5"-17.5"	14"-18"	N/A	N/A	15.5"-21.5"

Length is measured from top of footrest plate to top of seat rail. Without extensions bottom hanger hole not accessible for hardware. Heavy duty extensions do not telescope adjust. Footrests adjust vertically in length on heavy duty extension tubes.



Footplate Options

MAPS (Multi Axis Positioning System)	SPM-36040	\$ 325	Heel Loops	(E0951) SPM-36022	\$ 45
--------------------------------------	-----------	--------	------------	-------------------	-------

Requires selection of Aluminum Angle Adjustable Footplates. Not compatible with Composite footplates or Aluminum Footboard. Not compatible with Seating Dynamics hangers.

Calf Strap - Webbing	(K0038) SPM-36024	\$ 45
----------------------	-------------------	-------

Hanger Extension Options

4" Telescoping Extensions	SPM-30285	n/c	6" Telescoping Extensions	SPM-30286	n/c
---------------------------	-----------	-----	---------------------------	-----------	-----

4.5" Heavy Duty Extensions	SPM-36402	\$ 58	6.5" Heavy Duty Extensions	SPM-36403	\$ 68
----------------------------	-----------	-------	----------------------------	-----------	-------

Heavy duty extensions do not telescope adjust. Footrests adjust vertically in length on heavy duty extension tubes.

High Mount Clamp & Tubes	SPM-36410	\$ 102	Clear Selection
--------------------------	-----------	--------	-----------------

Description	hccps	Part No.	Retail	Description	hccps	Part No.	Retail
Armrests							
Back Post Mounted Armrests							
Omit Armrests							
Foam wrap pad STD on all back post mounted armrests..							
10.5" Flip-Back		SPM-38204	n/c	10.5" Flip-Back Locking	(E0973)	SPM-38201	\$ 265
13.5" Flip-Back		SPM-38202	n/c	13.5" Flip-Back Locking	(E0973)	SPM-38200	\$ 265
10.5" to 13.5" Flip-Back Locking, Telescoping	(E0973)	SPM-38210	\$ 285	17" to 20" Flip-Back Locking, Telescoping	(E0973)	SPM-38215	\$ 285
Full length pad on 13.5" or longer armrests only.							
Frame Mounted Armrests							
Single Post Height Adjustable, Removable - Low	(E0973)	SPM-38217	\$ 285	Single Post Height Adjustable, Removable - Standard	(E0973)	SPM-38203	\$ 285
Arm Pad Options							
Desk Length Pads		SPM-38213	n/c	Full Length Pads		SPM-38214	n/c
13.5" or longer armrests only.							

Armrest Heights

Armrest and Pad	Foam	Desk	Full
Flip Back	6.5" - 11.5"	7.5" - 12.5"	7.5" - 12.5"
Flip Back Locking	6.5" - 11.5"	7.5" - 12.5"	7.5" - 12.5"
Telescoping Flip Back	6.5" - 11.5"	7.5" - 12.5"	7.5" - 12.5"
Flip Back Locking Telescoping	6.5" - 11.5"	7.5" - 12.5"	7.5" - 12.5"
Single Post Height Adj. Short		8" - 14"	8" - 14"
Single Post Height Adj. Tall		10" - 16"	10" - 16"

All heights from top of seat frame to top of armrest pad.



Wheel/Caster Seat Rail to Floor Heights

Rear Wheel	Seat Rail	Caster Wheel			
		3"	4"	5"	6"
12"	Single	10.5"	11"	12"-13"	12.5"-13.5"
	Double	12.25"	13.75"	13.75"-14.75"	17.5"
16"	Single	10.5"	11"	12"-13"	12.5"-13.5"
	Double	12.25"	12.75"	13.75"-14.75"	14.25"-15.25"
18"	Single	11.5"	11"-11.5"	12"-13"	12.5"-13.5"
	Double	13.25"	12.75"-13.25"	13.75"-14.75"	14.25"-15.25"
20"	Single	12"	12"-12.5"	12"-13"	12.5"-13.5"
	Double	13.75"	13.75"-14.25"	13.75"-14.75"	14.25"-15.25"

Clear selection

Use chart to determine seat rail to floor height. Caster sizes may vary slightly in height by type. Seat rail to floor heights are approximate, and are impacted by wheel type, caster size and braking choice. Heights can vary +/- 1/4". Seat pan choice increases seat rail to floor height 3/8" to 3/4".

Casters

3" x 1" Polyurethane	SPM-34888	n/c	3" Polyurethane Light-Up	SPM-34111	\$ 87
4" x 1" Polyurethane	SPM-40000	n/c	4" x 1.4" Poly, Aluminum Mag	SPM-43000	\$ 125
5" x 1" Polyurethane	SPM-34555	n/c	5" Polyurethane Light-Up	SPM-35050	\$ 101
5" x 1.5" Polyurethane	SPM-34222	\$ 87	5" x 1.4" Poly, Aluminum Mag	SPM-42000	\$ 125
6" x 1" Polyurethane	SPM-34666	n/c	6" x 1.4" Poly, Aluminum Mag	SPM-44000	\$ 125
6" x 1.5" Polyurethane	SPM-34999	\$ 87			

Description	hccps	Part No.	Retail	Description	hccps	Part No.	Retail
Rear Wheels							
Mags				Spoke			
12" Mag Wheel		SPM-31525	n/c	16" Spoke Wheel - Black w/ Black Tire		SPM-31535	n/c
16" Mag Wheel		SPM-31530	\$ 41	18" Spoke Wheel - Black w/ Black Tire		SPM-31538	n/c
18" Mag Wheel		SPM-31533	\$ 41	20" Spoke Wheel - Aluminum Handrim		SPM-31540	\$ 204
20" Mag Wheel - Aluminum Handrim		SPM-31527	n/c	<i>Spoke wheels not available with plastic coated handrims.</i>			

Tire Options				Handrim Options			
Pneumatic Tire		SPM-31040	\$ 85	Plastic Coated Handrims		SPM-31005	\$ 119
Pneumatic Tire with Airless Insert	(E2213)	SPM-31000	\$ 85	<i>20" Mag wheels only.</i>			
Low Profile Polyurethane Tire	(E2218)	SPM-31045	n/c	Omit Handrims		SPM-31006	

Wheel Locks				Wheel Lock Options			
Standard				Extension Handles			
Push to Lock		SPM-31501	n/c	(E0961)	SPM-31801	\$ 75	
Pull to Lock		SPM-31506	n/c				

Anti-Tippers							
Anti-Tip Assembly - Fixed	(E0971)	SPM-31600	\$ 125	Anti-Tip Assembly - Swing-Away	(E0971)	SPM-31602	\$ 125
<i>Not available with everse Configuration Frame.</i>							

Seat Pans							
<i>ALL seat pans include 2" x 2" notches for growth adjustment.</i>							
Non-Adjustable				Adjustable			
Fixed Solid Seat Pan - Composite	(E2231)	SPM-39010	\$ 170	Fixed, Width Adjustable Solid Seat Pan - Aluminum	(E2231)	SPM-39040	\$ 290
<i>ALL Bolteron seat pans are made to fit frame dimensions unless specified below.</i>							
Seat Width _____" X		Seat Depth _____"		<i>Fixed Seat Pan raises the effective seat to floor height by 1/2".</i>			
Fixed Solid Seat Pan - Aluminum	(E2231)	SPM-39030	\$ 200	<i>Width Adjustable Solid Seat Pan adjusts 2" in width (in 1" increments) by assembly hardware to grow with SPM frame.</i>			
<i>Fixed Seat Pan raises the effective seat to floor height by 1/2".</i>							
Available in the following sizes ONLY:							
10" wide x 12" deep		16" wide x 18" deep		Available in the following sizes ONLY:			
12" wide x 14" deep		18" wide x 18" deep		10"-12" wide x 12" deep		14"-16" wide x 16" deep	
14" wide x 16" deep				12"-14" wide x 14" deep		16"-18" wide x 18" deep	

Mounting Hardware Options							
<i>Use to convert fixed seat pan to removable.</i>							
Removable Pan Hardware Kit	(K0108)	SPM-EZLITE	\$ 207				
<i>Removable Seat Pan Hardware raises the effective seat to floor height by 5/8".</i>							
<i>Includes 4-points of EZ-Lite mounting hardware, 2 each frame stopper clamps.</i>							

Accessories							
Clothing Guards - Fabric		SPM-CGF	\$ 75	Clothing Guards - Rigid		SPM-CGR	\$ 128
Footrest Hanger Pads - Pair	(K0108)	SFDI-9HP	\$ 97	Freedom Backpack	(K0108)	SPM-10900	\$ 60
<i>Wrap-around pads made from black neoprene.</i>							
Flip-Down Rigidizing Bar	(K0108)	SPM-23210	\$ 175	Freedom Canopy - Flip-Back	(K0108)	SPM-10905	\$ 134
<i>Mounts to back post tubes to add rigidity to frame. Does NOT adjust in width to grow with frame.</i>				<i>Canopy assembly includes removable mounting hardware. Available in black only with Freedom Designs logo. Includes rear flap with zippered storage pocket and clear-view window.</i>			