



Company Name:	
Account #:	
Ship To Address:	
City/State/Zip:	
Client Reference:	
Custom Molded CLIP file name:	

Date:	
Contact Name:	
E-mail Address:	
Phone Number:	
Purchase Order #:	

*Note: CLIP file name= 1st Initial, 1st 3 of last name & Account #

Mobility Base Information (optional)	
Brand:	Model:
Frame Width:	Frame Depth:

On Chair Information	
Invacare to mount cushions to NEW Invacare Chair	

When ordering email this order form and Invacare Chair order form to: elyriacustomseating@invacare.com or provide quote # below:

Invacare quote # : _____

Patient Information	
Gender:	Patient Width at Hips:
<input type="checkbox"/> Male	_____ inches _____
<input type="checkbox"/> Female	Patient Width at Chest:
	_____ inches _____

Freedom Designs to mount cushions to NEW Freedom Designs Chair	
----------------------------------------------------------------	--

If a Freedom Designs chair quote is to be converted please call 1-800-331-8551. Cushions will be drop shipped to Freedom Designs.

Freedom Designs quote / PO # : _____

Motion Concepts to mount cushions to NEW Motion Concepts Chair	
----------------------------------------------------------------	--

If a Motion Concepts chair quote is to be converted please call 1-888-433-6818. Cushions will be drop shipped to Motion Concepts.

Motion Concepts quote / PO # : _____

Seat Specifications

HCPCS E2609 \$1068.00

Cushion Dimensions

Cushion Width _____" (variable from 8" to 24" wide)
Seat cushion 21" or greater, additional cost applies \$75.00

Cushion Depth _____" (variable from 8" to 24" wide)
Seat cushion 21" or greater, additional cost applies \$75.00

Measured from the back of the digitizer to the place on the client's thigh where you want the cushion to end, add 1"

SO90 Leg Length Discrepancy \$75.00
Shorten left leg by _____"
Shorten right leg by _____"
*Longer Leg will be indicated by the overall cushion length

SO16 Growth Style \$75.00
Length : _____" + Growth _____" = _____" Total Length

Foam Options

Soft Foam No Charge
 Firm Foam No Charge
 Extra Firm Foam..... \$110.00

Mounting

TFNP New PinDot Pan \$215.00
 TFEP To Fit Existing Pan ____" x ____" No Charge
 CM06T Wood Mount with t-nuts \$215.00
Specify Non-std t-nut pattern: _____
 CM06 Wood Mount with out t-nuts \$150.00
 IDB/SM Infinity Drop Base 14 - 16" wide \$240.00
 IDB/MD Infinity Drop Base 17 - 19" wide \$240.00
 IDB/LG Infinity Drop Base 20 - 22" wide \$291.00

*If no mounting selected, cushion will have velcro on bottom

Seat Specifications

Cover Selection

- CMP Polartek
- CMS Lycra
- CMD Darlexx
- DT-2 Standard Dartex
- DT-2R Reversed Dartex
- L-05 Black Rubber Backed Lycra
- L-06 Gray Rubber Backed Lycra
- L-13 Light Blue Rubber Backed Lycra
- L-14 Red Rubber Backed Lycra
- L-15 Teal Rubber Backed Lycra
- L-18 Purple Rubber Backed Lycra
- L-19 Burgundy Rubber Backed Lycra
- L-20 Blue Rubber Backed Lycra
- L-23 Green Rubber Backed Lycra
- L-24 Spacer Mesh

When opting for a 2-tone fabric selection indicate "A" for contact surface, "B" for non-contact surfaces

Mounting Hardware

- HWPMK01 Pan Mounting Kit - 1" \$205.00
- HWPMK78 Pan Mounting Kit - 7/8" \$205.00
- HWWMK01 Pan Mounting Kit - 1" \$205.00
- HWWMK78 Pan Mounting Kit - 7/8" \$205.00
- OCMK01 J & L Brackets - 1" \$175.00
- OCMK01 J & L Brackets - 7/8" \$175.00
- FDI-538 Econo-Eze (includes Seat & Back) \$637.00
- OMIT Omit Hardware

Cover Style Selection

- Draw String No Charge
- 2 Piece Velcro No Charge
- Zipper with Velcro Bottom Standard

Additional Cover Selection

- SO25 Additional Cover \$100.00
Quantity _____ Fabric _____
- S040 Inner Water Resistant Cover (Zipper) \$210.00

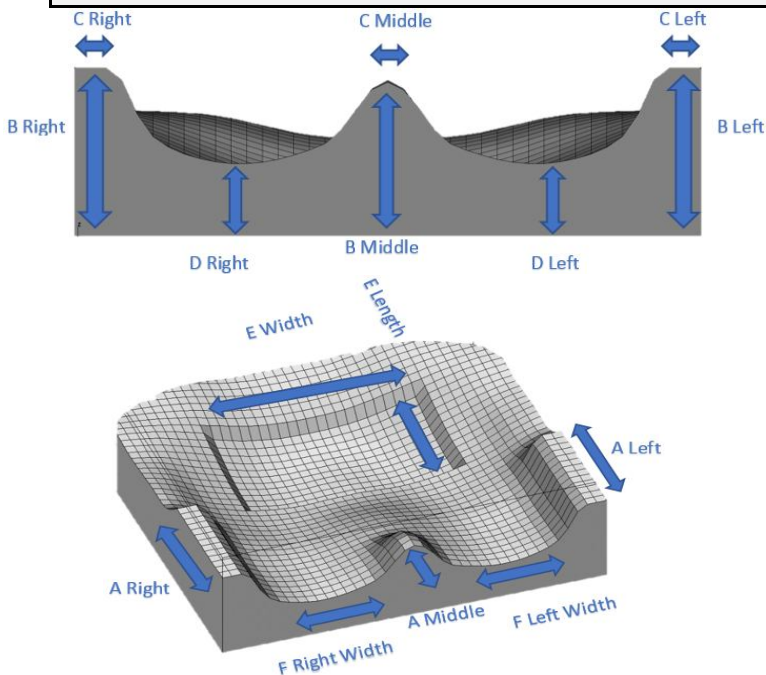
Seat Modifications

- S075 Rail Cut - Railcut Width: _____ " \$75.00
- SO77 Undercut _____ " \$75.00
- CM20 Strap Slots 1/2" x 1 1/2" std -Qty: _____ \$150.00
- VH02 Vent Holes - Qty: \$150.00

Soft Spot / Overlay / Recess Option

- CM09 Softspot - Standard Foam \$165.00
Qty: _____ Depth: _____ (1/2" - 1")
- CM09V Softspot - Visco Foam \$275.00
(Qty: _____ Depth: _____ (1/2" - 1"))
- VF05 Visco Foam Overlay 1/2" \$275.00
- VF01 Visco Foam Overlay 1" \$330.00
- SF05 Standard Softspot Foam Overlay 1/2" \$165.00
- SF01 Standard Softspot Foam Overlay 1" \$220.00
- CM30 Recess only- Depth: _____ " \$105.00
- CM30G Recess with Silicone Pad \$275.00
- STAR Recess with Star Airflow Insert
 - 14" Wide \$404.50
 - 16" Wide \$404.50
 - 18" Wide \$539.50
- Recess with Action Gel Insert available after 6/15/18
 - ACTF Action Free Float * \$343.50 / \$575.00
 - ACTW Action Waffle * \$343.50 / \$575.00
 - ACTP Action Pebble * \$343.50 / \$575.00

Seat Modifications

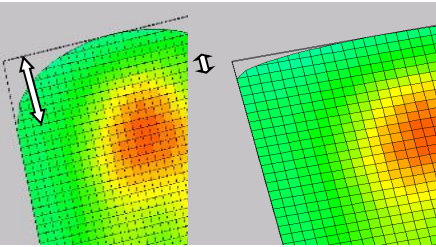


- B = Lateral & Medial Support Height
Right: _____ Middle: _____ Left: _____
- C = Lateral & Medial Support Width
Right: _____ Middle: _____ Left: _____
- D = Leg Trough Thickness
Right: _____ Left: _____
- A = Lateral & Medial Support Length
Right: _____ Middle: _____ Left: _____
- F = Leg Trough Width
Right: _____ Left: _____
- E = Soft Spot or Recess Width & Length
Width: _____ Length: _____

Seat Modifications

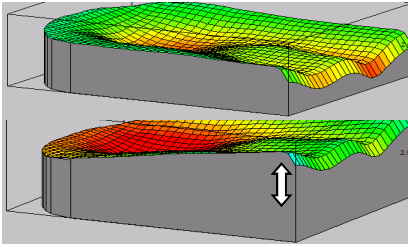
Radius: (4" STD)

- 1 inch
- 2 inch
- 3 inch
- 4 inch



Wedge:

- Front to Back (for Anti-Thrust) _____ inches
- Back to Front (for Dump) _____ inches
- Left to Right (right lower obliquity) _____ inches
- Right to Left (left lower obliquity) _____ inches



Back Specifications

HCPCS E2617 \$1068.00

Cushion Dimensions

Cushion Width _____" (variable from 8" to 24" wide)
 Seat cushion 21" or greater, additional cost applies..... \$75.00

Cushion Depth _____" (variable from 8" to 24" wide)
 Seat cushion 21" or greater, additional cost applies \$75.00

Measured from the grid on Back Shape Sensor prior to filling gap.
 If no gap, this will be your overall cushion height

SO17 Fill Gap No Charge
 Sensor Grid : _____ + Gap _____" = _____" Total Height

Foam Options

- Soft Foam No Charge
- Firm Foam No Charge
- X-tra Firm Foam \$110.00

Cover Selection

- CMP Polartek
- CMS Lycra
- CMD Darlexx
- DT-2 Standard Dartex
- DT-2R Reversed Dartex
- L-05 Black Rubber Backed Lycra
- L-06 Gray Rubber Backed Lycra
- L-13 Light Blue Rubber Backed Lycra
- L-14 Red Rubber Backed Lycra
- L-15 Teal Rubber Backed Lycra
- L-18 Purple Rubber Backed Lycra
- L-19 Burgundy Rubber Backed Lycra
- L-20 Blue Rubber Backed Lycra
- L-23 Green Rubber Backed Lycra
- L-24 Spacer Mesh

When
 opting for
 a 2-
 tone
 fabric
 selection
 indicate
 "A" for
 contact
 surface,
 "B" for
 non-
 contact
 surfaces

Cover Style Selection

- Draw String No Charge
- 2 Piece Velcro No Charge
- Zipper Standard

Additional Cover Selection

- SO25 Additional Cover \$100.00
 Quantity _____ Fabric _____
- S040 Inner Water Resistant Cover (Zipper) \$210.00

Mounting

- SFK30 Kwik Fit Mounting shell w/ hardware..... \$400.00

Wheelchair Frame Width _____ inches (Variable 12" to 24")

KwikFit Mounting for Backs will fit between the wheelchair canes.

Cushion and Shell will be made 2 1/2" smaller than the wheelchair

width indicated. Standard KwikFit Mounted Back will have a 2" curved top.



- TFNP New PinDot Pan \$215.00
- TFEP To Fit Existing Pan _____" x _____" No Charge
- CM06T Wood Mount with t-nuts \$215.00

Specify Non-std t-nut pattern: _____

- CM06 Wood Mount with out t-nuts \$150.00
- ELITE Matrix Elite Shell..... \$550.00
- ELITE TR Matrix Elite TR Shell..... \$550.00
- ELITE PB Matrix Elite PB Shell..... \$550.00

*If no mounting selected, cushion will have velcro on bottom

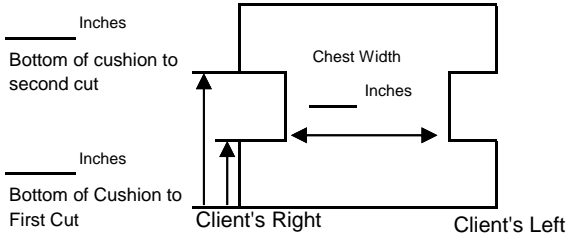
Mounting Hardware

- HWPMK01 Pan Mounting Kit - 1" \$205.00
- HWPMK78 Pan Mounting Kit - 7/8" \$205.00
- HWWMK01 Wood Mounting Kit - 1" \$205.00
- HWWMK78 Wood Mounting Kit - 7/8" \$205.00
- OCMK01 J & L Brackets - 1" \$175.00
- OCMK01 J & L Brackets - 7/8" \$175.00
- FDI-596 Econo-Eze (Back Hardware) \$596.00
- HWABK Adjustable Back Mounting Hardware ... \$260.00

Back Specifications

Back Modifications

- CM22 Rail Cut - Finished Rail Cut _____ " \$75.00
- Rail Cut to PlnDot Pan..... \$75.00
- Rail Cut to Kwik Fit..... \$75.00
- VH02 Vent Holes..... \$150.00
- CM20 Strap Slots 1/2" x 1 1/2" std..... \$150.00
- CM30 Recess only \$105.00
- S076 I-Cut provide measurements below..... \$75.00



Soft Spot / Overlay / Recess Option

- CM09 Softspot - Standard Foam \$165.00
Qty: _____ Depth: _____ (1/2" - 1")
 - CM09V Softspot - Visco Foam \$275.00
(Qty: _____ Depth: _____ (1/2" - 1"))
 - VF05 Visco Foam Overlay 1/2" \$275.00
 - VF01 Visco Foam Overlay 1" \$330.00
 - SF05 Standard Softspot Foam Overlay 1/2"..... \$165.00
 - SF01 Standard Softspot Foam Overlay 1"..... \$220.00
 - CM30 Recess only- Depth: _____ "..... \$105.00
 - CM30G Recess with Silicone Pad..... \$275.00
 - Recess with Action Gel Insert.....available after 6/15/18
 - ACTF Action Free Float * \$343.50 / \$575.00
 - ACTW Action Waffle * \$343.50 / \$575.00
 - ACTP Action Pebble..... * \$343.50 / \$575.00
- *Size determines price >17" higher price applies

Monogram

- \$65.00
- Style Block Cursive
- Thread Color: White Blue
- Pink Yellow
- Teal Red

Name: (Name will be centered top 3/4" front of back cushion)

Back Modifications

Trunk Lateral Height:

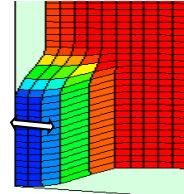
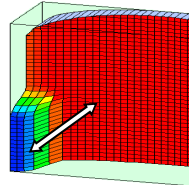
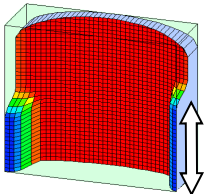
- Right _____ inches
- Left _____ inches

Lateral Depth:

- Right _____ inches
- Left _____ inches

Lateral Thickness:

- Right _____ inches
- Left _____ inches



Accessories

- AR20 Desk Length Armrest (Pair) \$250.00
- TR40L Tray Receptacle - Left \$140.00
- AR24 Full Length Armrest (Pair) \$250.00
- TR40R Tray Receptacle - Right \$140.00
- LB07 Small Footrest (Pair) \$235.00
- GL01 Regular Links \$125.00
- LB08 Large Footrest (Pair) \$235.00
- GL03 Extra Strong Links..... \$140.00
- LT06 Legrest Tops (Pair) \$235.00
- GL10 Dial Links (seat angle must be > 105)..... \$250.00
- SB05 ContourU Pelvic Strap \$45.00
- Headrest Adapter Plate* \$45.00
- PDSL M Swing Away Lateral Supports Medium..... \$290.00
- * will not work with Freedom t-nut pattern
- PDSL L Swing Away Lateral Supports Large..... \$290.00
- SLK Fixed Lateral Supports R/L for KwikFit shell.... \$125.00
- * Must be ordered through Freedom Designs 800-331-8551

Special Requests not on Order Form