

Instruction — Tilt Channel Scraper Description & Adjustment – *P.R.D. CG*



Our kids are our passion.™

Freedom Designs, Incorporated
2241 N Madera Road, Simi Valley, CA 93065
phone: 800-331-8551 fax: 888-582-1509
e: customerservice@freedomdesigns.com
www.freedomdesigns.com

Tools needed:
5/32" Allen wrench
Gap gauge or single edge razor blade.

This instruction applies to all *P.R.D. CG* wheel-chairs

Each side tilt channel is equipped with four plastic scrapers designed to eliminate debris from the interior of the tilt channel during normal use of the tilt mechanism. One adjustable vertical scraper is mounted to the outside face of each forward and rear bearing carrier (fig.1).

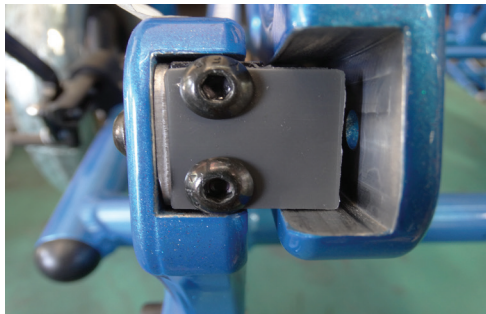


fig. 1

One horizontal scraper is mounted to each inboard lateral bearing carrier and is non-adjustable (fig. 2).



fig. 2

Care must be used when mounting the upper tilt frame assembly into the lower tilt frame assembly, that each of the horizontal (clear) scrapers are fit into the tilt channel (figs. 3 & 4).

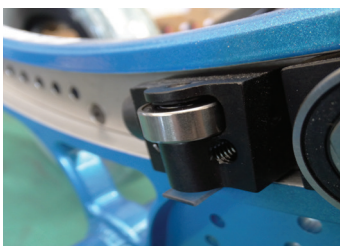


fig. 3



fig. 4

Failure to properly fit the horizontal scraper will result in the scraper sitting outside of the channel and causing drag on the action of the tilt mechanism (fig. 5).

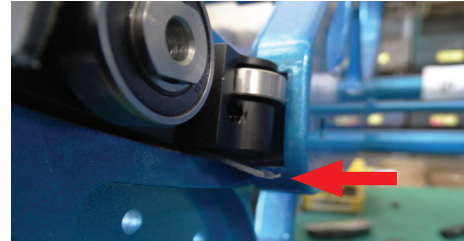


fig. 5

The front and rear vertical scrapers are adjustable and are meant to wipe large debris from the tilt channel. The scraper is adjusted by loosening the two 10-32" button head cap screws (fig. 6).

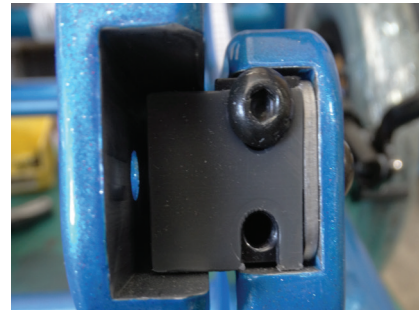


fig. 6

Move the scraper up or down as needed for clearance. Scrapers are adjusted from the factory at approximately .009" or the thickness of a single edge razor blade (fig. 7).

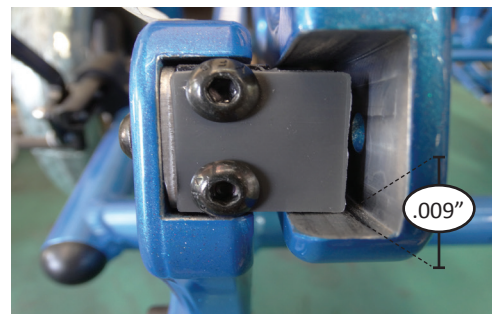


fig. 7

Too small of a gap may cause rubbing or noise through the tilt cycle. Too large of a gap will make the scrapers ineffective at minimizing debris.