

Instruction — Tilt Tension Retro Kit Installation & Adjustment – CGX



Our kids are our passion.™

Freedom Designs, Incorporated
2241 N Madera Road, Simi Valley, CA 93065
phone: 800-331-8551 fax: 888-582-1509
e: customerservice@freedomdesigns.com
www.freedomdesigns.com

Tools Needed:
7/16" Combination Wrench
1/8" Hex key wrench
3/16" Hex key wrench

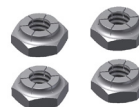


P/N 17150 Kit consists of (4) each:

1/4-20 x 1" socket head screw



1/4-20 locking jam nut



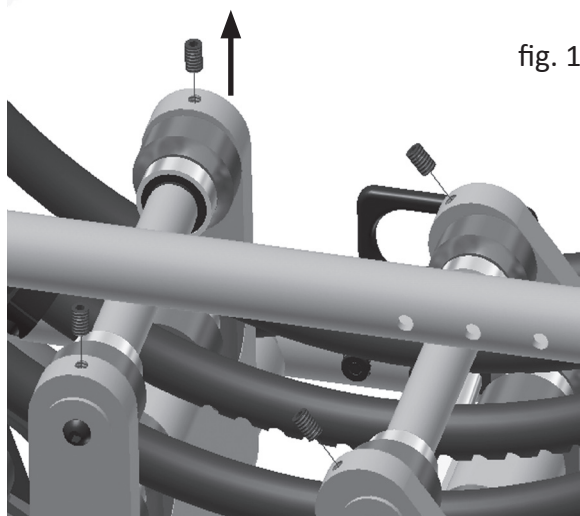
vinyl cap



Effective 12/22/2011 all new CGX wheelchairs. Retrofittable to all prior existing CGX Wheelchairs.

Step 1:

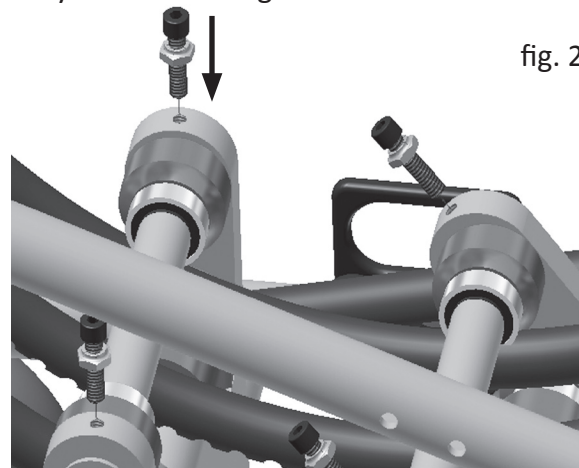
Remove the four existing sets screws using a 1/8" hex key wrench (see fig. 1).



Step 2:

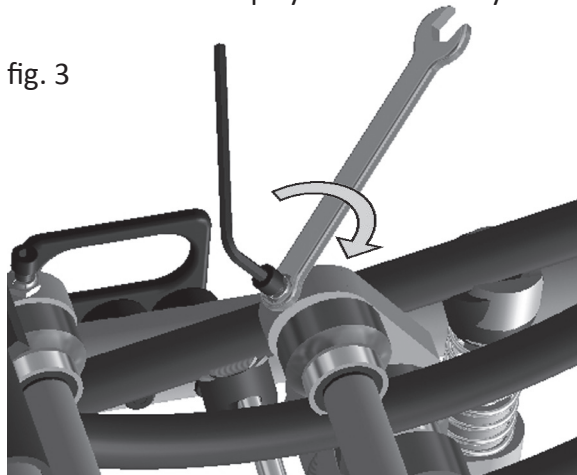
Install and tighten rear (2) screws until roller bearings make contact against tilt arc tubes (see fig. 2).

Note: It will require some effort to install screws due to the nylon lock coating on screw threads.



Step 3:

Install and tighten (2) front screws until roller bearings make contact against tilt arc tubes. Check tension on the roller bearings by tilting and un-tilting seat frame. When tightened properly, seat frame should tilt smoothly and there should be no play in the assembly.



Hold screws in position with a 3/16" hex key wrench. Using a 7/16" wrench, tighten locking jam nut against frame (see fig. 3).

Install the (4) vinyl caps over screw heads (see fig. 4)

