



NXT-SE Pediatric Manual Wheelchair



Thank you for using Freedom Designs / Invacare eForms

Invacare is pleased to offer you an upgraded solution to your ordering process. Our enhanced order forms allow you to fill out a form electronically, print and fax the form, save and email* it to Customer Service, or maintain the business practices that work for you today. The format has been revised to reveal a cleaner look with electronic selection and input functions.

For additional information please visit www.freedomdesigns.com



Adobe Acrobat Reader DC

* Interactive functions of our new forms work best with the latest version of Adobe Acrobat Reader DC visit <https://get.adobe.com/reader/> to download and install on your PC or Mac or visit Google Play/ iTunes to download the Adobe Acrobat Reader DC app for your device.

Save

Adobe Acrobat Reader DC allows you to save this form with your content - to complete later or use as a starting point for your next form.

Please note that content must be added and saved in Acrobat - saving content from completed forms in the browser may not be possible.

Submit

Adobe Acrobat Reader DC allows you to submit this form electronically via your email client.

Simply click the submit button below and step through the simple process.

Print

If you do not have access to Adobe Acrobat Reader DC simply print this form and complete it by hand and fax it to our Customer Service Department at:

800-331-8551



Account Information

Request Type: Quote Order

Date: _____

Account #: _____

Company: _____

SHIP TO

Name: _____

Address: _____

City: _____ State: _____ Zip: _____

Country: _____

Purchase Order #: _____

CONTACT

Name: _____

Back Up Contact: _____

Phone: _____

Email: _____

Comments / Made For: _____

MF: Please do not provide with a customer name

Base Options

A seating system must be purchased separately. No seating system is provided with the NXT frame. No seat or back upholstery is available as an option.

TRANSPORT OPTIONAL

NXT-30304 NXT-SE Pediatric Folding \$2903 (E1234)

NXT-30314 NXT-SE Pediatric Rigid \$2742 (E1233)

Transportation Option selected separately below. Includes Freedom Future Fit Program

NXT-99997 Transport Brackets - SE \$353

Must be installed by Freedom Designs manufacturing.
Freedom's combination of customized seating and wheelchair frames are WC19 crash test approved in accordance with RESNA WC-4: 2012 Section 19, Annexes A, B, C & E as well as ISO 7176-19 (2008) Annexes A, C & D.
Most Freedom seating, hardware, and positioning accessories have been WC20 tested and approved for transit.

Frame Dimensions

FRAME WIDTH SETTING & CROSS BRACE

NXT-30250 n/c

Adjusts 10" to 12"

10"

11"

12"

NXT-30210 n/c

Adjusts 11" to 13"

11"

12"

13"

NXT-30220 n/c

Adjusts 12" to 14"

12"

13"

14"

NXT-30230 n/c

Adjusts 13" to 15"

13"

14"

15"

NXT-30240 n/c

Adjusts 14" to 16"

14"

15"

16"

NXT-30290 n/c

Adjusts 15" to 17"

15"

16"

17"

NXT-30260 n/c

Adjusts 16" to 18"

16"

17"

18"

NXT-30261 n/c

Adjusts 17" to 18"

17"

18"

NXT-30262 n/c

Not width adjustable

18"

NXT-30263 n/c

Not with short frame

19"

NXT-30264 \$538 (E2201)

Not with short frame

20"

Frame widths measures across and from outside of seat frame tubes. Vent and battery trays only with 14" wide and greater frame.

FRAME DEPTH & BACK POST SETTING

Short Frame, Short Tilt

Seat rail to floor height range is 12.5" to 16.5". Seat frame widths of 19" and 20" not available with short frame. 22" & 24" wheels not available with low tilt bracket. All vent and battery trays not available with short frame. All dual post armrests not available with short frame.

12"	n/c
13"	n/c
14"	n/c
15"	n/c
16"	n/c
17"	n/c
Requires 2" Extension	
18"	n/c
Requires 2" Extension	

Medium Frame, Short Tilt

Seat rail to floor height range is 12.5" to 16.5". 22" & 24" wheels not available with low tilt

14"	n/c
15"	n/c
16"	n/c
17"	n/c
18"	n/c
19"	n/c
Requires 2" Extension	
20"	\$592 (E2203)
Includes 2" Extension	
21"	\$592 (E2203)
Includes 4" Extension	
22"	\$1065 (E2204)
Includes 4" Extension	

Seat Rail Extensions

NXT-30525 2" Extension - Pair\$45 (K0108)

NXT-30531 4" Extension - Pair\$45 (K0108)

Specify Back Post Location (if other than specified above) _____ "

Medium Frame, Tall Tilt

Seat rail to floor height range is 14" to 18".

14"	n/c
15"	n/c
16"	n/c
17"	n/c
18"	n/c
19"	n/c
Requires 2" Extension	
20"	\$592 (E2203)
Includes 2" Extension	
21"	\$592 (E2203)
Includes 4" Extension	
22"	\$1065 (E2204)
Includes 4" Extension	

Pediatric Long Frame, Tall Tilt \$178 (E1298)

Seat rail to floor height range is 14" to 18".

16"	n/c
17"	n/c
18"	n/c
19"	n/c
20"	\$592 (E2203)
21"	\$592 (E2203)
22"	\$1065 (E2204)
23"	\$1065 (E2204)
Includes 2" Extension	
24"	\$1065 (E2204)
Includes 2" Extension	
25"	\$1065 (E2204)
Includes 4" Extension	
26"	\$1065 (E2204)
Includes 4" Extension	

Seat Rail Options

LEAF - LOWER EXTREMITY ACCOMMODATION FRAME

Not available with ALL Contracture & 3D Dynamic footrest systems.

NXT-30324 LEAF Seat Frame- Pair\$834 (K0108)

Front frame angle adjusts 22° from midline for abduction, adduction, and windswept lower extremity positioning. Seat frame(s) can be individually repositioned for up to a 2" leg length discrepancy.

NXT-30276 5° Anterior Tilt Seat Frame.....n/c

Limits posterior tilt to 40°. Includes split collars for adjustment. Medium with Tall Tilt and Long frames only.

SRO - SEAT RAIL ONLY

NXT-30325 SRO Seat Frame- Pair\$350 (K0108)

SRO is manufactured without standard footrest hanger attachments.

Vent Options

11-7000 Vent Tray - Fixed\$531 (E1029)

Not with Foot activated tilt. For LP10 style vent, base must be 16" or greater. Tray measures 4" narrower than the width of the base frame and 16" deep

11-1100 Back Post Mounted Vent Bracket\$633 (E1029)

For LTV vents ONLY. Does NOT include dovetail bracket. Weight limit 15 lbs.

11-8000 Battery Tray - Fixed\$518 (K0108)

Tray measures 4" narrower than the width of the base frame and 10" deep

563 Quick Release Tray Hardware\$329 (K0108)

Auxillary Device Mounts

11-3100 O2 Holder - Aluminum w/ QR Hdwe\$631 (E0108)

11-4000 IV Pole w/ Mounting Hardware\$311 (K0108)

Tilt Activations

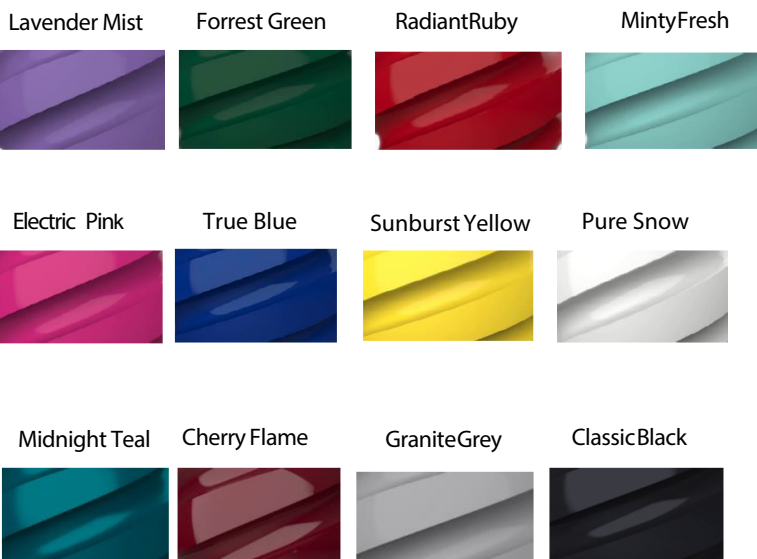
NXT-30272 Dual Lever Hand Activated Tilt.....n/c

NXT-30273 Foot Activated Tiltn/c

Not available with vent tray.

Frame Colors (Note-Default finish is glossy)

Cherry Flame.....n/c	N/A	N/A
ClassicBlack.....n/c	Sparkle	Matte
Electric Pinkn/c	Sparkle	Matte
Forrest Green.....n/c	Sparkle	N/A
GraniteGrey.....n/c	Sparkle	Matte
Lavender Mist.....n/c	Sparkle	Matte
Midnight Teal.....n/c	N/A	N/A
MintyFresh.....n/c	Sparkle	Matte
Pure Snown/c	Sparkle	N/A
RadiantRuby.....n/c	Sparkle	N/A
Sunburst Yellow.....n/c	Sparkle	Matte
True Blue.....n/c	Sparkle	Matte



Back Posts

BACK POST OPTIONS

NXT-30545 Fold-Down Back Posts.....n/c

NXT-30532 Dynamic Rocker Back -

Seating Dynamics..... \$2200 (K0108)

Angle adjustable from 72° to 108° in 6° increments. Can be locked-out when needed.

Includes a set of 4 elastomers in different durometers to allow spring adjustment in the field.

PUSH HANDLE OPTIONS

NXT-30518 90° Bend Back Post Tubes.....n/c

NXT-30544 Straight Back Post Tubes.....n/c

Requires selection of Push Button Angle Adjustable Stroller Handle (NXT-30570 or NXT-30575).

PUSH HANDLE HEIGHT

NXT-30515 Short - 20" Highn/c

NXT-30516 Tall - 26" Highn/c

NXT-30514 Medium - 23" High.....n/c

Push Handle Extension Options



-30560



-30590



-30570



-30575



-30517

All push handle extensions except NXT-30560 add approximately 6.5" to push handle height. All push handle extensions except Individual include a black neoprene wrap around pad.

NXT-30560 Push Handle Extension -

Width Adjustable.....n/c

Not available with Straight Back Posts.

NXT-30570 Push Button,

Angle-Adjustable Stroller Handle Extension.....\$121

Available on wheelchair frames 15W & smaller only. Plastic hinge up to 200° range of adjustment. NXT-30570 or NXT-30575 required with Straight Back Post Tubes (NXT-30544)

Not removable, but does allow frame to fold.

NXT-30517 Individual Stroller

Handle Extensions Removable - Pair.....\$119

Not available with Straight Back Posts.

NXT-30590 Stroller Handle Extension -

Width Adjustable, Removable.....\$103

Not available with Straight Back Posts.

NXT-30575 Heavy Duty Push Button,

Angle-Adjustable Stroller Handle Extension..... \$193

Available on any size frame. Metal hinge up to 180° range of adjustment. NXT-30570 or NXT-30575 required with Straight Back Post Tubes (NXT-30544)

Not removable, but does allow frame to fold.

Footrests

HANGERS

NXT-30280 75° Pop-Up Swing Away Hangers.....n/c

NXT-30281 90° Pop-Up Swing Away Hangers.....n/c

Not available with 8" or 10" Telescoping Extensions.

NXT-30279 90° Pop-Up Swing
Away Elevating Legrests (ELRs)..... \$318 (E0990)

Not available with all Telescoping extensions.

NXT-30282 75° Latch Style Swing Away Hangers n/c

NXT-30283 90° Latch Style Swing Away Hangersn/c

Not available with 8" or 10" Telescoping Extensions.

NXT-33000 Omit Legrest Hangers & Footrests.....n/c

FOOTPLATES & FOOTBOARDS

NXT-36033 Aluminum Angle
Adj. Flip-up Footplates \$205 (K0040)

Does not include Heel Loops, select below.

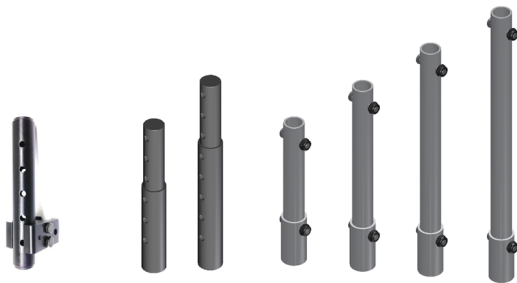
NXT-17070 Composite Flip-Upn/c

NXT-36029 Aluminum Angle
Adjustable Footboard Removable..... \$205 (K0040)

NXT-36404 Omit Footrest Plates.....n/c

Footrest / Extension Lengths

Extension/ Hanger	75° Pop	75° Lch	90° Pop	90 °Lch	ELR (90°)
Hanger Only	6"-8"	5.5"-8.5"	4"-8"	4"-8"	6"-12"
High Mount	N/A	N/A	1.5"-3"	N/A	N/A
4.5" H D Ext.	9"-12"	9.5"-12.5"	9"-12"	9"-12"	13"-15"
6.5" H D Ext.	9"-15"	9.5"-15.5"	9"-15"	9"-15"	13"-17"
4" Adjustable	10"-13"	9.5"-12.5"	11"-13"	10"-13"	13"-15"
6" Adjustable	12"-15"	10.5"-14.5"	13"-15"	12"-15"	13"-18"
8" Adjustable	14"-17"	12.5"-16.5"	N/A	N/A	14"-20"
10" Adjustable	16"-19"	14.5"-18.5"	N/A	N/A	16"-22"



MAPS Footrest / Extension Lengths

Extension/ Hanger	75° Pop	75° Lch	90° Pop	90 °Lch	ELR (90°)
Hanger Only	5.5"-7.5"	5"-8"	5.5"-7.5"	4.5"-7.5"	4.5"- 8.5" & 11.5"
High Mount	N/A	N/A	N/A	N/A	N/A
4.5" H D Ext.	8.5"-11.5"	9"-12"	8.5"-11.5"	8.5"-11.5"	12.5"-14.5"
6.5" H D Ext.	8.5"-13.5"	9"-14"	8.5"-13.5"	8.5"-13.5"	12.5"-16.5"
4" Adjustable	8.5"-11.5"	9"-12"	9.5"-11.5"	8.5"-11.5"	12.5"-14.5"
6" Adjustable	10.5"-13.5"	10"-14"	11.5"-13.5"	8.5"-13.5"	12.5"-17.5"
8" Adjustable	12.5"-15.5"	12"-16"	N/A	N/A	13.5"-19.5"
10" Adjustable	14.5"-17.5"	14"-18"	N/A	N/A	15.5"-21.5"

Length is measured from top of footrest plate to top of seat rail. Without extensions bottom hanger hole not accessible for hardware. Heavy duty extensions do not telescope adjust. Footrests adjust vertically in length on heavy duty extension tubes.



FOOTPLATE OPTIONS

NXT-36040 MAPS (Multi Axis Positioning System) \$350

Requires selection of Aluminum Angle Adjustable Footplates. Not compatible with Composite footplates or Aluminum Footboard. Not compatible with Seating Dynamics hangers.

NXT-36022 Heel Loops \$49 (E0951)

NXT-36024 Calf Strap - Webbing \$49 (K0038)

HANGER EXTENSION OPTIONS

NXT-30285 4" Telescoping Extensions n/c

NXT-30286 6" Telescoping Extensions n/c

NXT-30287 8" Telescoping Extensions n/c

Not available with all 90° hangers.

NXT-30288 10" Telescoping Extensions n/c

Not available with all 90° hangers.

NXT-36402 4.5" Heavy Duty Extensions \$63

NXT-36403 6.5" Heavy Duty Extensions \$74

Heavy duty extensions do not telescope adjust. Footrests adjust vertically in length on heavy duty extension tubes.

NXT-36410 High Mount Clamp & Tubes \$110

Clear Selection

SPECIALIZED FOOTRESTS

ALL legrest measurements are from the seat rail to footplate. Not available with LEAF or SRO seat rail options. Frame and/or front caster choice may limit adjustment range and/or cause interference.

Specialized Footrest Seat Rail to Footplate Measurements

Length measured from top of footrest plate to top of seat rail.

MUST BE COMPLETED FOR CORRECT SELECTION OF COMPONENTS

NXT-LL Back of the Knee (to Heel): _____

NXT-CT Cushion Thickness: _____

CONTRACTURE FOOTREST HANGERS

ALL legrest measurements are from the seat rail to footplate. Not available with LEAF or SRO seat rail options. Frame and/or front caster choice may limit

NXT-30291-2 Contracture Short - 11" to 15" \$3838

Includes short hanger extension.

NXT-30292-2 Contracture Long - 15" to 19" \$3838

Includes long hanger extension.



3D DYNAMIC FOOTREST HANGERS

NXT-30299-2 3D Dynamic Footrest - \$7800

SPECIALIZED FOOTPLATES

Must pick a footplate and extension

NXT-6503 4" x 6" HD Aluminum Footplates n/c

NXT-6504 5" x 8" HD Aluminum Footplates n/c

For frames 16" wide and greater only.

NXT-6505 6" x 10" HD Aluminum Footplates n/c

For frames 18" wide and greater only. Not available with Contracture Hangers



Armrests

BACK POST MOUNTED ARMRESTS

Omit Armrests

Foam wrap pad STD on all back post mounted armrests.

NXT-38204 10.5" Flip-Back.....n/c

NXT-38210 10.5" to 13.5" Flip-Back

Locking, Telescoping\$307 (E0973)

Full length pad on 13.5" or longer armrests only.

NXT-38201 10.5" Flip-Back Locking\$285(E0973)

NXT-38202 13.5" Flip-Back.....n/c

NXT-38200 13.5" Flip-Back Locking.....\$285(E0973)

NXT-38215 17" to 20" Flip-Back

Locking Telescoping.....\$307(E0973)

FRAME MOUNTED ARMRESTS

NXT-38217 Single Post Height Adjustable,

Removable - Short\$307 (E0973)

NXT-38203 Single Post Height Adjustable,

Removable - Standard\$307 (E0973)

NXT-38205 Dual Post Fixed Height Removable.....n/c
22" & 24" Wheels not available with dual post armrests

NXT-38206 Dual Post Flip-Back Height

Adjustable, Removable.....\$318 (E0973)

ARM PAD OPTIONS

NXT-38213 Desk Length Padsn/c

NXT-38214 Full Length Padsn/c

Armrest Heights

Armrest and Pad	Foam	Desk	
Flip Back	6.5" - 11.5"	7.5" - 12.5"	7.5" - 12.5"
Flip Back Locking	6.5" - 11.5"	7.5" - 12.5"	7.5" - 12.5"
Telescoping Flip Back	6.5" - 11.5"	7.5" - 12.5"	7.5" - 12.5"
Flip Back Locking Telescoping	6.5" - 11.5"	7.5" - 12.5"	7.5" - 12.5"
Single Post Height Adj. Short		8" - 14"	8" - 14"
Single Post Height Adj. Tall		10" - 16"	10" - 16"
Dual Post Fixed Height		9.5"	9.5"
Dual Post Flip Back Height Adj.		9" - 13"	9" - 13"

All heights from top of seat frame to top of armrest pad.



Wheel/Caster Seat Rail to Floor Heights

Rear Wheel	Tilt Pivot	Caster Wheel				
		3"	4"	5"	6"	7"
12"	Low	12.5"-13"	13.5	15.5"	16"	
	Tall	14"-14.5"	15"	17"	17.5"	
16"	Low	12.5"-13"	13.5"-14"	14.5"	16"	16.5"
	Tall	14"-14.5"	15"-15.5"	16"	17.5"	18"
18"	Low	12.5"-13"	13.5"-14.5"	14.5"-15.5"	15.5"	
	Tall	14"-14.5"	15"-16.5"	16"-17"	17"	
20"	Low		14"-15"	14.5"-15.5"	15.5"-16"	16.5"
	Tall		15.5"-16.5"	16"-17"	17"-17.5"	18"
22"	Low					
	Tall		16.5"	16.5-17"	17"-17.5"	18"
24"	Low					
	Tall				17.5"	18"
Clear Selection						

Use chart to determine seat rail to floor height. Caster sizes may vary slightly in height by type. Seat rail to floor heights are approximate, and are impacted by wheel type, caster size and braking choice. Heights can vary +/- 1/4". Seat pan choice increases seat rail to floor height 3/8" to 3/4".

Casters

NXT-34888 3" x 1" Polyurethanen/c

NXT-34111 3" Polyurethane Light-Up \$94

NXT-40000 4" x 1" Polyurethane.....n/c

NXT-43000 4" x 1.4" Poly, Aluminum Mag \$180

NXT-34555 5" x 1" Polyurethane.....n/c

NXT-34222 5" x 1.5" Polyurethane..... \$94

NXT-35050 5" Polyurethane Light-Up \$110

NXT-42000 5" x 1.4" Poly, Aluminum Mag \$180

NXT-34666 6" x 1" Polyurethanen/c

NXT-34999 6" x 1.5" Polyurethane..... \$94

NXT-44000 6" x 1.4" Poly, Aluminum Mag \$180

NXT-34444 6" x 2" Polyurethane, Treaded\$105

NXT-34777 7" x 1" Polyurethane.....n/c

7" casters not available with 12" mag wheels.

NXT-34200 7" x 2" Foam Filled\$215

Wheel Options	12"	16"	18"	20"	22"	24"
MAGS FOR POLYURETHANE TIRES - FULL PROFILE	X	X	X	X	X	X
MAGS FOR PNEUMATIC TIRES - <i>Compatible with all pneumatic tire options</i>	X	X	X	X	X	X
Spoke Wheel - Black - <i>Compatible with all pneumatic tire options</i>		X	X			
Polyurethane Tires - Black, Full Profile	X	X	X	X	X	X
Pneumatic Tires - Black	X	X	X	X	X	X
Pneumatic Tires - Gray	X	X	X	X	X	X
Airless Inserts - <i>Compatible with all pneumatic tire options</i>	X	X	X	X	X	X

Rear Wheels

MAGS FOR **PNEUMATIC** TIRES

NXT-31525 12" Mag Wheel.....	n/c
12" mag wheels not available with 7" casters.	
NXT-31530 16" Mag Wheel.....	\$45
NXT-31533 18" Mag Wheel.....	\$45
NXT-31527 20" Mag Wheel - Aluminum Handrim	n/c
NXT-31528 22" Mag Wheel - Aluminum Handrim.....	n/c
NXT-31529 24" Mag Wheel - Aluminum Handrim.....	n/c

MAGS FOR **POLYURETHANE** TIRES - FULL PROFILE

NXT-31520 12" Wheel for Full Profile Poly.....	n/c
NXT-31522 16" Wheel for Full Profile Poly.....	n/c
NXT-31521 18" Wheel for Full Profile Poly.....	n/c
NXT-31519 20" Wheel for Full Profile Poly.....	n/c
NXT-31518 22" Wheel for Full Profile Poly.....	n/c
NXT-31517 24" Wheel for Full Profile Poly.....	n/c

SPOKE

NXT-31535 16" Spoke Wheel - Black w/ Black Tire.....	n/c
NXT-31538 18" Spoke Wheel - Black w/ Black Tire.....	n/c

HANDRIM OPTIONS

NXT-31005 Aluminum Coated Handrims.....	\$130
---	-------

NXT-31006 Omit Handrims
20", 22" & 24" Mag wheels only

PNEUMATIC TIRE OPTIONS

NXT-31543 Black Pneumatic Tire.....	n/c
NXT-31544 Black Pneumatic Tire with Airless Inserts.....	\$92 (E2213)
NXT-31040 Gray Pneumatic Tire.....	n/c (E2211, E2212)
NXT-31000 Gray Pneumatic Tire with Airless Inserts.....	\$92 (E2213)

POLYURETHANE TIRE OPTIONS

NXT-31516 Full Poly Black - 12", 18", 20", 22", 24"	n/c
NXT-31515 Full Poly Black - 16"	\$80

Wheel Locks

STANDARD

NXT-31501 Push to Lock.....n/c

NXT-31506 Pull to Lockn/c

WHEEL LOCK OPTIONS

NXT-31801 Extension Handles\$81 (E0961)

DRUM LOCK

Includes manual wheel locks to be used with public transportation. Not Available with 20", 22" & 24" Spoke Wheels.

NXT-31508 Foot Activated Wheel Lock.....n/c

Not available with ALL vent and battery trays.

NXT-30275 Hand Activated Brake

and Wheel Lock System\$1000 (E2228)

Anti-Tippers

NXT-31600 Curb Assist Anti-Tip

Assembly Flip-Up, Adjustable\$135 (E0971)

Pair includes one anti-tip tube with curb assist feature.

NXT-31603 Standard Anti-Tip

Assembly Flip-Up, Adjustable\$135 (E0971)

Seat Pans

Only choose one Seat Pan option

ALL seat pans include 2" x 2" notches for growth adjustment.

NON-ADJUSTABLE

NXT-39010 Mounted Solid Seat Pan - Composite\$183 (E2231)

Fixed Seat Pan raises the effective seat to floor height by 1/2".

ALL Composite seat pans are made to fit frame dimensions unless specified below.

Seat Width _____" X Seat Depth _____"

NXT-39030 Mounted Solid Seat Pan - Aluminum\$215 (E2231)

Fixed Seat Pan raises the effective seat to floor height by 1/2"

Available in the following sizes ONLY:

10" wide x 12" deep

12" wide x 14" deep

14" wide x 16" deep

16" wide x 18" deep

18" wide x 18" deep

ADJUSTABLE

NXT-39040 Mounted, Width Adjustable

Solid Seat Pan - Aluminum\$312 (E2231)

Width Adjustable Solid Seat Pan adjusts 2" in width (in 1" increments) by assembly hardware to grow with NXT frame.

Available in the following sizes ONLY:

10"-12" wide x 12" deep

12"-14" wide x 14" deep

14"-16" wide x 16" deep

16"-18" wide x 18" deep

MOUNTING HARDWARE OPTIONS

Use to convert fixed seat pan to removable.

NXT-EZLITE Removable Pan Hardware Kit.....\$223 (K0108)

Removable Seat Pan Hardware raises the effective seat to floor height by 5/8".

Includes 4-points of EZ-Lite mounting hardware, 2 each frame stopper clamps.

Accessories

SFDI-9HP Footrest Hanger Pads - Pair \$112 (K0108)
Wrap-around pads made from black neoprene.

NXT-23210 Flip-Down Rigidizing Bar \$189 (K0108)
Mounts to back post tubes to add rigidity to frame. Does NOT adjust in width to grow with frame.

NXT-10905 Freedom Canopy - Flip-Back..... \$275* (K0108)

Canopy assembly includes removable mounting hardware. Available in black only with Freedom Designs logo. Includes rear flap with zippered storage pocket and clear-view window.

*Included at no charge when ordered with a Freedom Solid Seat & Solid Back

Specifications

Frame Style	Tilt-In-Space
Base Frame Widths	14" - 20"
Overall Width	Base width + 7.5" (all wheels without drum lock) Base width + 8.5" (with drum lock except 16" & 18" mag wheel) Base width + 9.5" (with drum brake and 16" or 18" mag wheel)
Seat Widths	14" - 20"
Seat Depths	14" - 26"
Back Heights	20", 23", 26"
Adjustable Angle Back	90°, 100°, 110°, 120°
Tilt Range	0° to 55°
Recline Back	N/A
Weight Limit	225 LBS.
Transport Weight	Approximately 22 lbs
Warranty	5 year warranty on side frames and quick release axles

Special Configurations Through Customer Service

Asymmetrical Seat Depth	Seat rails may be configured up to 4" offset
-------------------------	--

HCPCS Codes

are provided based on verification through PDAC or our interpretation of the code definitions. The use of HCPCS codes does not ensure coverage or payment. For coverage information, verify the appropriate payer's



Adobe Acrobat Reader DC

* Interactive functions of our new forms work best with the latest version of Adobe Acrobat Reader DC visit <https://get.adobe.com/reader/> to download and install on your PC or Mac or visit Google Play/ iTunes to download the Adobe Acrobat Reader DC app for your device.

Save

Adobe Acrobat Reader DC allows you to save this form with your content - to complete later or use as a starting point for your next form.

Please note that content must be added and saved in Acrobat - saving content from completed forms in the browser may not be possible.

Submit

Adobe Acrobat Reader DC allows you to submit this form electronically via your email client.

Simply click the submit button below and step through the simple process.

Print

If you do not have access to Adobe Acrobat Reader DC simply print this form and complete it by hand and fax it to our Customer Service Department at:

800-331-8551