



Yes, you can.®



# PRO-CG™ Pediatric Manual Wheelchair

## Thank you for using Freedom Designs / Invacare eForms

Invacare is pleased to offer you an upgraded solution to your ordering process. Our enhanced order forms allow you to fill out a form electronically, print and fax the form, save and email\* it to Customer Service, or maintain the business practices that work for you today. The format has been revised to reveal a cleaner look with electronic selection and input functions.

For additional information please visit [www.freedomdesigns.com](http://www.freedomdesigns.com)



### Adobe Acrobat Reader DC

\* Interactive functions of our new forms work best with the latest version of Adobe Acrobat Reader DC visit <https://get.adobe.com/reader/> to download and install on your PC or Mac or visit Google Play/ iTunes to download the Adobe Acrobat Reader DC app for your device.

### Save

Adobe Acrobat Reader DC allows you to save this form with your content - to complete later or use as a starting point for your next form. Please note that content must be added and saved in Acrobat - saving content from completed forms in the browser may not be possible.

### Submit

Adobe Acrobat Reader DC allows you to submit this form electronically via your email client.

Simply click the submit button below and step through the simple process.

### Print

If you do not have access to Adobe Acrobat Reader DC simply print this form and complete it by hand and fax it to our Customer Service Department at:

**800-331-8551**



## Account Information

Request Type: Quote

Order

Date: \_\_\_\_\_

Purchase Order #: \_\_\_\_\_

Account #: \_\_\_\_\_

Contact Name: \_\_\_\_\_

Company: \_\_\_\_\_

Back Up Contact: \_\_\_\_\_

Ship To Name: \_\_\_\_\_

Phone: \_\_\_\_\_

Address: \_\_\_\_\_

Email: \_\_\_\_\_

City: \_\_\_\_\_ State: \_\_\_\_\_ Zip: \_\_\_\_\_

Comments / Made For : \_\_\_\_\_

Country: \_\_\_\_\_

MF: Please do not provide with a customer name

## Base Options

A seating system must be purchased separately. No seating system is provided with the PRO-CG frame. No seat or back upholstery is available as an option.

### TRANSPORT OPTIONAL

PRO-30300 PRO-CG Pediatric .....\$3,010 (E1161)

Transportation Option selected separately. (Includes Freedom Future Fit Program)

PRO-99998 Transport Brackets .....\$323

Must be installed by Freedom Designs manufacturing. Freedom's combination of customized seating and wheelchair frames are WC19 crash test approved in accordance with RESNA WC-4: 2012 Section 19, Annexes A, B, C & E as well as ISO 7176-19 (2008) Annexes A, C & D. Most Freedom seating, hardware, and positioning accessories have been WC20 tested and approved for transit.

## Frame Dimensions

### PRO-30220 14" Base Width

#### Specify Seat Width Setting

PRO-12W 12" ..... n/c

PRO-13W 13" ..... n/c

PRO-14W 14" ..... n/c  
Seat frame adjusts 14" to 16" wide in 1" increments.

#### Specify Seat Depth Setting

PRO-30504 12" ..... n/c

PRO-30505 13" ..... n/c

PRO-30506 14" ..... n/c

PRO-30521 15" ..... n/c

PRO-30522 16" ..... n/c

PRO-30523 17" ..... n/c

PRO-30524 18" ..... n/c

PRO-30527 19" ..... n/c  
2" extension requiredPRO-30528 20" ..... \$592 (E2203)  
2" extension required

### PRO-30240 16" Base Width

#### Specify Seat Width Setting

PRO-14W 14" ..... n/c

PRO-15W 15" ..... n/c

PRO-16W 16" ..... n/c  
Seat frame adjusts 16" to 18" wide in 1" increments.

#### Specify Seat Depth Setting

PRO-30506 14" ..... n/c

PRO-30521 15" ..... n/c

PRO-30522 16" ..... n/c

PRO-30523 17" ..... n/c

PRO-30524 18" ..... n/c

PRO-30527 19" ..... n/c

PRO-30528 20" ..... \$592 (E2203)

PRO-30529 21" ..... \$592 (E2203)  
2" extension requiredPRO-30535 22" ..... \$1,065 (E2204)  
4" extension required



### PRO-30260 18" Base Width

#### Specify Seat Width Setting

PRO-16W 16" ..... n/c

PRO-17W 17" ..... n/c

PRO-18W 18" ..... n/c

Seat frame adjusts 18" to 20" wide in 1" increments.

#### Specify Seat Depth Setting

PRO-30522 16" ..... n/c

PRO-30523 17" ..... n/c

PRO-30524 18" ..... n/c

PRO-30527 19" ..... n/c

PRO-30528 20" ..... \$592 (E2203)

PRO-30529 21" ..... \$592 (E2203)

PRO-30535 22" ..... \$1,065 (E2204)

PRO-30536 23" ..... \$1,065 (E2204)  
2" extension required

PRO-30537 24" ..... \$1,065 (E2204)  
2" extension required

### SEAT RAIL EXTENSIONS

PRO- 30525 2" Extension - Pair.....\$45 (K0108)

PRO- 30531 4" Extension - Pair.....\$45 (K0108)

Specify Back Post Location (if other than specified above) \_\_\_\_\_ "

## Seat Rail Options

### LEAF - LOWER EXTREMITY ACCOMMODATION FRAME

Not available with ALL Contracture & 3D Dynamic footrest systems.

PRO-30324 LEAF Seat Frame- Pair..... \$834 (K0108)

Front frame angle adjusts 22° from midline for abduction, adduction, and windswept lower extremity positioning. Seat frame(s) can be individually repositioned for up to a 2" leg length discrepancy.

### SRO - SEAT RAIL ONLY

PRO-30325 SRO Seat Frame- Pair..... \$350 (K0108)

SRO is manufactured without standard footrest hanger attachments.

## Vent Options

PRO-30335 Vent Tray Base W/ Tray..... \$634 (E1029)

Extended wheelchair base including vent tray. For LP10 style vent, base must be 16" or greater. Tray measures full width of the base frame and 12" deep

11 - 1000 Back Post Mounted Vent Bracket..... \$633 (E1029)

For LTV vents ONLY. Does NOT include dovetail bracket. Weight limit 15 lbs.

## Auxillary Device Mounts

11-3100 O2 Holder - Aluminum w/ QR Hdwe....\$631 (K0108)

11-4000 IV Pole w/ Mounting Hardware..... \$311 (K0108)

## Tilt Activations

PRO-30272 Dual Lever Hand Activated Tilt.....n/c

PRO-30273 Foot Activated Tilt.....n/c

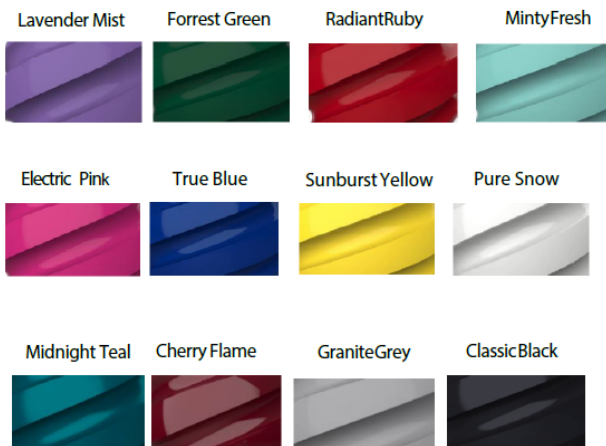
Not available with vent tray.

## Frame Colors (Includes Seat Rail, Caster Housing, and Hangers)

Cherry Flame..... Glossy	Midnight Teal..... Glossy
Classic Black..... G / S / M	Minty Fresh.....G / S / M
Electric Pink.....G / S / M	Pure Snow.....G / S
Forrest Green..... G / S	Radiant Ruby..... G / S
Granite Grey..... G / S / M	Sunburst Yellow.....G / S / M
Lavender Mist.....G / S / M	True Blue.....G / S / M

FINISH - NOTE-Default finish is Glossy

Glossy                      Matte                      Sparkle



## Base Colors

PRO-BBASE Black Base.....n/c
PRO-CBASE Matching Base and Frame Color.....\$100
PRO-CACCENT Accent Base Color.....\$150

## Back Posts

### BACK POST OPTIONS

PRO-30545 Fold-Down Back Posts.....n/c
PRO-30562 Reduced Shear Recline Back.....\$1,500 (E1226)
PRO-30542 Dynamic Rocker Back - Seating Dynamics.....\$2,200 (E2398) Angle adjustable from 72° to 108° in 6° increments. Can be locked-out when needed. Includes a set of 4 elastomers in different durometers to allow spring adjustment in the field.

PRO-30564 Reduced Shear Recline Back with Angle-  
Adjustable Stroller Handle Extension..... \$1,712

Recline range is 65° from 97° to 162°. Pivot point is 2.5" above the seat rail. Solid Back Insert installation requires 4-points of attachment hardware. Seat-to-Back hinges are not compatible with any Super Reclining Reduced Shear Back.

### PUSH HANDLE OPTIONS

PRO-30518 90° Bend Back Post Tubes.....n/c

PRO-30544 Straight Back Post Tubes .....n/c

Requires selection of Push Button Angle Adjustable Stroller Handle (PRO-30571 or PRO-30576). Not available with Reduced Shear Recline Back.

### PUSH HANDLE HEIGHT

PRO-30515 Short - 20" High.....n/c

PRO-30514 Medium - 23" High.....n/c

PRO-30516 Tall - 26" High.....n/c

## Push Handle Extension Options



All push handle extensions except PRO-30561 add approximately 6.5" to push handle height. All push handle extensions except Individual include a black neoprene wrap around pad.

### PRO-30561 Push Handle Extension - Width Adjustable..n/c

Not available with Straight Back Posts. Not available with Recline.

### PRO-30571 Push Button, Angle-Adjustable Stroller Handle Extension..... \$121

Available on wheelchair frames 15W & smaller only. Plastic hinge up to 200° range of adjustment. PRO-30571 or PRO-30576 required with Straight Back Post Tubes (PRO-30544)

### PRO-30517 Individual Stroller Handle Extensions Removable - Pair..... \$119

Not available with Straight Back Posts. Not available with Recline.

### PRO- 30590 Stroller Handle Extension - Width Adjustable, Removable .....\$103

Not available with Straight Back Posts. Not available with Recline.

### PRO-30576 Heavy Duty Push Button, Angle-Adjustable Stroller Handle Extension .....\$193

Available on any size frame. Metal hinge up to 180° range of adjustment. PRO-30571 or PRO-30576 required with Straight Back Post Tubes (PRO-30544)

## Footrests

### Footrest / Extension Lengths

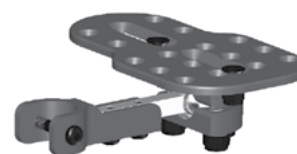
Extension/ Hanger	75° Pop	75° Lch	90° Pop	90 °Lch	ELR (90°)
Hanger Only	6"-8"	5.5"-8.5"	4"-8"	4"-8"	6"-12"
High Mount	N/A	N/A	1.5"-3"	N/A	N/A
4.5" H D Ext.	9"-12"	9.5"-12.5"	9"-12"	9"-12"	13"-15"
6.5" H D Ext.	9"-15"	9.5"-15.5"	9"-15"	9"-15"	13"-17"
4" Adjustable	10"-13"	9.5"-12.5"	11"-13"	10"-13"	13"-15"
6" Adjustable	12"-15"	10.5"-14.5"	13"-15"	12"-15"	13"-18"
8" Adjustable	14"-17"	12.5"-16.5"	N/A	N/A	14"-20"
10" Adjustable	16"-19"	14.5"-18.5"	N/A	N/A	16"-22"



### MAPS Footrest / Extension Lengths

Extension/ Hanger	75° Pop	75° Lch	90° Pop	90 °Lch	ELR (90°)
Hanger Only	5.5"-7.5"	5"-8"	5.5"-7.5"	4.5"-7.5"	4.5"-8.5" & 11"
High Mount	N/A	N/A	N/A	N/A	N/A
4.5" H D Ext.	8.5"-11.5"	9"-12"	8.5"-11.5"	8.5"-11.5"	12.5"-14.5"
6.5" H D Ext.	8.5"-13.5"	9"-14"	8.5"-13.5"	8.5"-13.5"	12.5"-16.5"
4" Adjustable	8.5"-11.5"	9"-12"	9.5"-11.5"	8.5"-11.5"	12.5"-14.5"
6" Adjustable	10.5"-13.5"	10"-14"	11.5"-13.5"	8.5"-13.5"	12.5"-17.5"
8" Adjustable	12.5"-15.5"	12"-16"	N/A	N/A	13.5"-19.5"
10" Adjustable	14.5"-17.5"	14"-18"	N/A	N/A	15.5"-21.5"

Length is measured from top of footrest plate to top of seat rail. Without extensions bottom hanger hole not accessible for hardware. Heavy duty extensions do not telescope adjust. Footrests adjust vertically in length on heavy duty extension tubes.





## HANGERS

PRO-30280 75° Pop-Up Swing Away Hangers.....n/c

PRO-30281 90° Pop-Up Swing Away Hangers.....n/c  
Not available with 8" or 10" Telescoping Extensions.

PRO-30279 90° Pop-Up Swing Away Elevating  
Legrests (ELRs).....\$318 (E099)  
Not available with all Telescoping extensions.

PRO-30282 75° Latch Style Swing Away Hangers.....n/c

PRO-30283 90° Latch Style Swing Away Hangers.....n/c  
Not available with 8" or 10" Telescoping Extensions.

PRO-33000 Omit Legrest Hangers & Footrests.....n/c

## FOOTPLATES & FOOTBOARDS

PRO-36033 Aluminum Angle Adj. Flip-up  
Footplates .....std (K0040)  
Does not include Heel Loops, select below.

PRO-17070 Composite Flip-Up .....n/c

PRO-36029 Aluminum Angle  
Adjustable Footboard Removable .....\$205 (K0040)

PRO-36404 Omit Footrest Plates .....n/c

## FOOTPLATE OPTIONS

PRO-36040 MAPS (Multi Axis Positioning System) .....\$350  
Requires selection of Aluminum Angle Adjustable Footplates. Not  
compatible with  
Composite footplates or Aluminum Footboard. Not compatible with  
Seating Dynamics hangers.

PRO-36022 Heel Loops.....\$49 (E0951)

PRO-36024 Calf Strap - Webbing.....\$49 (K0038)

## HANGER EXTENSION OPTIONS

PRO-30285 4" Telescoping Extensions .....n/c

PRO-30286 6" Telescoping Extensions .....n/c

PRO-30287 8" Telescoping Extensions.....n/c  
Not available with all 90° hangers.

PRO-30288 10" Telescoping Extensions .....n/c  
Not available with all 90° hangers.

PRO-36402 4.5" Heavy Duty Extensions.....\$63

PRO-36403 6.5" Heavy Duty Extensions.....\$74

Heavy duty extensions do not telescope adjust. Footrests adjust vertically in  
length on heavy duty extension tubes.

PRO-36410 High Mount Clamp & Tubes .....\$110

Clear Selection

## SPECIALIZED FOOTRESTS

ALL legrest measurements are from the seat rail to footplate. Not available with LEAF or SRO seat rail options. Frame and/or front caster choice may limit adjustment range and/or cause interference.

### Specialized Footrest Seat Rail to Footplate Measurements

Length measured from top of footrest plate to top of seat rail.

MUST BE COMPLETED FOR CORRECT SELECTION OF COMPONENTS

PRO - LL Back of the Knee (to Heel): \_\_\_\_\_

PRO - CT Cushion Thickness: \_\_\_\_\_

## CONTRACTURE FOOTREST HANGERS

ALL legrest measurements are from the seat rail to footplate. Not available with LEAF or SRO seat rail options. Frame and/or front caster choice may limit

PRO-30291-2 Contracture Short - 11" to 15" ..... \$3838

Includes short hanger extension.

PRO-30292-2 Contracture Long - 15" to 19" ..... \$3838

Includes long hanger extension.



## 3D DYNAMIC FOOTREST HANGERS

PRO-30299-2 3D Dynamic Footrest - ..... \$7800

## SPECIALIZED FOOTPLATES

Must pick a footplate and extension

PRO-6503 4" x 6" HD Aluminum Footplates ..... n/c

PRO-6504 5" x 8" HD Aluminum Footplates ..... n/c

For frames 16" wide and greater only.

PRO-6505 6" x 10" HD Aluminum Footplates ..... n/c

For frames 18" wide and greater only. Not available with Contracture Hangers



## Armrests

### BACK POST MOUNTED ARMRESTS

Omit Armrests

Foam wrap pad STD on all back post mounted armrests.

PRO-38204 10.5" Flip-Back .....n/c

PRO-38202 13.5" Flip-Back .....n/c

PRO-38210 10.5" to 13.5" Flip-Back  
Locking, Telescoping .....\$307 (E0973)

Full length pad on 13.5" or longer armrests only.

PRO-38201 10.5" Flip-Back Locking.....\$285 (E0973)

PRO-38200 13.5" Flip-Back Locking .....\$285 (E0973)

PRO-38215 17" to 20" Flip-Back  
Locking, Telescoping .....\$307 (E0973)

## Armrest Heights

Armrest and Pad	Foam	Desk	Full
Flip Back	6.5" - 11.5"	7.5" - 12.5"	7.5" - 12.5"
Flip Back Locking	6.5" - 11.5"	7.5" - 12.5"	7.5" - 12.5"
Telescoping Flip Back	6.5" - 11.5"	7.5" - 12.5"	7.5" - 12.5"
Flip Back Locking Telescoping	6.5" - 11.5"	7.5" - 12.5"	7.5" - 12.5"
Single Post Height Adj. Short		8" - 14"	8" - 14"
Single Post Height Adj. Tall		10" - 16"	10" - 16"
Dual Post Fixed Height		9.5"	9.5"
Dual Post Flip Back Height Adj.		9" - 13"	9" - 13"

All heights from top of seat frame to top of armrest pad.



### FRAME MOUNTED ARMRESTS

PRO-38217 Single Post Height Adjustable,  
Removable - Low .....\$307 (E0973)

PRO-38203 Single Post Height Adjustable,  
Removable - Standard.....\$307 (E0973)

PRO-38206 Dual Post Flip-Back Height  
Adjustable, Removable .....\$318 (E0973)

PRO-38205 Dual Post Fixed Height Removable .....n/c  
Not available with short frame. 22" & 24" Wheels not available with dual post armrests

### ARM PAD OPTIONS

PRO-38213 Desk Length Pads .....n/c

PRO-38214 Full Length Pads .....n/c  
13.5" or longer armrests only.

## Casters

PRO-40000 4" x 1" Polyurethane .....n/c

PRO-43000 4" x 1.4" Poly, Aluminum Mag.....\$180

PRO-34555 5" x 1" Polyurethane.....n/c

PRO-34222 5" x 1.5" Polyurethane.....\$94

PRO-35050 5" Polyurethane Light-Up .....\$110

PRO-42000 5" x 1.4" Poly, Aluminum Mag .....\$180

PRO-34666 6" x 1" Polyurethane.....n/c

PRO-34999 6" x 1.5" Polyurethane .....\$94

PRO-44000 6" x 1.4" Poly, Aluminum Mag .....\$180

PRO-34444 6" x 2" Polyurethane, Treaded.....\$105

PRO-34777 7" x 1" Polyurethane .....n/c

PRO-34200 7" x 2" Foam Filled .....\$215



Wheel Options	12"	16"	18"	20"	22"	24"
MAGS FOR <b>POLYURETHANE</b> TIRES - FULL PROFILE	X	X	X	X	X	X
MAGS FOR <b>PNEUMATIC</b> TIRES - <i>Compatible with all pneumatic tire options</i>	X	X	X	X	X	X
Spoke Wheel - Black - <i>Compatible with all pneumatic tire options</i>		X	X			
Polyurethane Tires - Black, Full Profile	X	X	X	X	X	X
Pneumatic Tires - Black	X	X	X	X	X	X
Pneumatic Tires - Gray	X	X	X	X	X	X
Airless Inserts - <i>Compatible with all pneumatic tire options</i>	X	X	X	X	X	X

## Rear Wheels

### MAGS FOR **PNEUMATIC** TIRES

PRO-31525 12" Mag Wheel.....n/c	
12" mag wheels not available with 7" casters.	
PRO-31530 16" Mag Wheel..... \$45	
PRO-31533 18" Mag Wheel.....\$45	
PRO-31527 20" Mag Wheel - Aluminum Handrim ..... n/c	
PRO-31528 22" Mag Wheel - Aluminum Handrim..... n/c	
PRO-31529 24" Mag Wheel - Aluminum Handrim.....n/c	

### MAGS FOR **POLYURETHANE** TIRES - FULL PROFILE

PRO-31520 12" Wheel for Full Profile Poly.....n/c	
PRO-31522 16" Wheel for Full Profile Poly.....n/c	
PRO-31521 18" Wheel for Full Profile Poly.....n/c	
PRO-31519 20" Wheel for Full Profile Poly.....n/c	
PRO-31518 22" Wheel for Full Profile Poly.....n/c	
PRO-31517 24" Wheel for Full Profile Poly.....n/c	

### SPOKE

PRO-31535 16" Spoke Wheel - Black w/ Black Tire..... n/c	
PRO-31538 18" Spoke Wheel - Black w/ Black Tire.....n/c	

### HANDRIM OPTIONS

PRO-31005 Aluminum Coated Handrims.....\$130	
--	--

PRO-31006 Omit Handrims	
20", 22" & 24" Mag wheels only	

### **PNEUMATIC** TIRE OPTIONS

PRO-31543 Black Pneumatic Tire.....n/c	
PRO-31544 Black Pneumatic Tire with Airless Inserts.....\$92 (E2213)	
PRO-31040 Gray Pneumatic Tire.....n/c (E2211, E2212)	
PRO-31000 Gray Pneumatic Tire with Airless Inserts.....\$92 (E2213)	

### **POLYURETHANE** TIRE OPTIONS

PRO-31516 Full Poly Black - 12", 18", 20", 22", 24" .....n/c	
PRO-31515 Full Poly Black - 16" .....\$80	

## Wheel/Caster Seat Rail to Floor Heights

Rear Wheel	Caster Wheel					
	4"	5"	6"	6 x 2"	7"	7 x 2"
12"	15"	15"	18.5"	18.5"	18.5"	18.5"
	15.5"	15.5"	19"	19"	19"	19"
	16"	16"				
	18.5"	18.5"				
	19"	19"				
16"	15"	15"	16"	16"	17"	17"
	15.5"	15.5"	16.5"	16.5"	17.5"	17.5"
	16"	16"	17"	17"	20"	20"
	16.5"	16.5"	17.5"	17.5"	20.5"	20.5"
	17"	17"	20"	20"		
18"	17.5"	17.5"				
	15"	15.5"	16"	16"	17"	17"
	15.5"	16"	16.5"	16.5"	17.5"	17.5"
	16"	16.5"	17"	17"	18"	18"
	16.5"	17"	17.5"	17.5"	18.5"	18.5"
20"	17"	17.5"	18"	18"	19"	19"
	17.5"	18"	18.5"	18.5"	19.5"	19.5"
	18"	18.5"	19"	19"	20"	20"
	18.5"	19"	19.5"	19.5"		
	19"	19.5"	20"	20"		
22"						
	18"	18"	18"	18"	18"	18"
	18.5"	18.5"	18.5"	18.5"	18.5"	18.5"
	19"	19"	19"	19"	19"	19"
		19.5"	19.5"	19.5"	20"	20"
24"						
	18.5"	18.5"	19"	19"	19"	19"
	19"	19"	19.5"	19.5"	20"	20"
			20"	20"	20.5"	20.5"
Clear Selection						

Use chart to determine seat rail to floor height. Caster sizes may vary slightly in height by type. Seat rail to floor heights are approximate, and are impacted by wheel type, caster size and braking choice. Heights can vary +/- 1/4". Seat pan choice increases seat rail to floor height 3/8" to 3/4".



## Wheel Locks

### STANDARD

PRO-31501 Push to Lock.....n/c

PRO-31506 Pull to Lock.....n/c

### WHEEL LOCK OPTIONS

PRO-31801 Extension Handles..... \$81 (E0961)

### DRUM LOCK

Includes manual wheel locks to be used with public transportation. Not available with 12" mag wheels with low pro poly tires. Not Available with 20", 22" & 24" Spoke Wheels.

PRO-31508 Foot Activated Wheel Lock.....n/c

Not available with ALL vent and battery trays.

PRO-30275 Hand Activated Brake

and Wheel Lock System ..... \$1,000 (E2228)

## Anti-Tippers

PRO-31600 Curb Assist Anti-Tip

Assembly Flip-Up, Adjustable.....\$135 (E0971)

Pair includes one anti-tip tube with curb assist feature.

PRO-31605 Spring Loaded Swing-Away

Anti-Tip Assy - Foot Activated..... \$194 (E0971)

## Seat Pans

Only choose one Seat Pan option

ALL seat pans include 2" x 2" notches for growth adjustment.

### NON-ADJUSTABLE

Fixed Seat Pan raises the effective seat to floor height by 1/2".

ALL Composite seat pans are made to fit frame dimensions unless specified below.

PRO-39010 Mounted Solid Seat Pan - Composite..\$183 (E2231)

Seat Width \_\_\_\_\_" X Seat Depth \_\_\_\_\_"

PRO-39030 Mounted Solid Seat Pan - Aluminum.... \$215 (E2231)

Fixed Seat Pan raises the effective seat to floor height by 1/2".

Available in the following sizes ONLY:

10" wide x 12" deep

12" wide x 14" deep

14" wide x 16" deep

16" wide x 18" deep

18" wide x 18" deep

### ADJUSTABLE

PRO-39040 Fixed, Width Adjustable

Solid Seat Pan - Aluminum..... \$312 (E2231)

Fixed Seat Pan raises the effective seat to floor height by 1/2".

Width Adjustable Solid Seat Pan adjusts 2" in width (in 1" increments) by assembly hardware to grow with PRO frame.

Available in the following sizes ONLY:

10"- 12" wide x 12" deep

12" - 14" wide x 14" deep

14" - 16" wide x 16" deep

16" - 18" wide x 18" deep

### MOUNTING HARDWARE OPTIONS

Use to convert fixed seat pan to removable.

PRO-DROP1 1" Drop Pan Hardware Kit..... \$223 (K0108)

PRO-EZLITE Removable Pan Hardware Kit..... \$223 (K0108)

Removable Seat Pan Hardware raises the effective seat to floor height by 5/8". Includes 4-points of EZ-Lite mounting hardware, 2 each frame stopper clamps.

PRO-DROP2 2" Drop Pan Hardware Kit..... \$223 (K0108)

Includes 4 each 2" drop hooks, 4 each 408 clamps, & 2 each Glide Lock clamps. Not available with ANY Aluminum Solid Seat Pan.



## Accessories

PRO-10920 Tilt Range Limit Kit.....\$38 (K0108)

Pins install into outside of tilt channel to limit tilt travel.

SFDI-9HP Footrest Hanger Pads - Pair.....\$112 (K0108)

Wrap-around pads made from black neoprene.

PRO-23210 Flip-Down Rigidizing Bar.....\$189 (K0108)

Mounts to back post tubes to add rigidity to frame. Does NOT adjust in width to grow with frame.

PRO-10905 Freedom Canopy - Flip-Back.....\$275\* (K0108)

Canopy assembly includes removable mounting hardware. Available in black only with Freedom Designs logo. Includes rear flap with zippered storage pocket and clear-view window.

\*included at no charge when ordered with a Freedom Solid Seat & Solid Back

## Specifications

Frame Style	Tilt-In-Space
Base Frame Widths	16", 18", 20"
Overall Width	Base width + 7.5" (all wheels without drum lock) Base width + 8.5" (with drum lock except 16" & 18" mag wheel) Base width + 9.5" (with drum brake and 16" or 18" mag wheel)
Seat Widths	14" - 20"
Seat Depths	14" - 26"
Back Heights	20", 23", 26"
Adjustable Angle Back	90°, 100°, 110°, 120°
Tilt Range	0° to 55°
Recline Back	162°
Weight Limit	250 LBS.
Transport Weight	
Warranty	Lifetime on frame

## Special Configurations Through Customer Service

Anterior Tilt	As much as -5° depending on configuration. Reduces posterior tilt angle by same amount.
Asymmetrical Seat Depth	Seat rails may be configured up to 4" offset

## HCPCS Codes

are provided based on verification through PDAC or our interpretation of the code definitions. The use of HCPCS codes does not ensure coverage or payment. For coverage information, verify the appropriate payer's coverage policy.

### Save

Adobe Acrobat Reader DC allows you to save this form with your content - to complete later or use as a starting point for your next form. Please note that content must be added and saved in Acrobat - saving content from completed forms in the browser may not be possible.

### Submit

Adobe Acrobat Reader DC allows you to submit this form electronically via your email client.

Simply click the submit button below and step through the simple process.

### Print

If you do not have access to Adobe Acrobat Reader DC simply print this form and complete it by hand and fax it to our Customer Service Department at:

**800-331-8551**